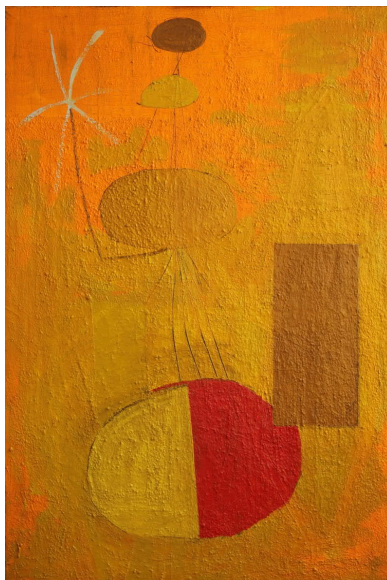


Masterpieces Modern

April 5 to June 22, 2019



"I can't stand cool paintings."

Robert Motherwell

Orange Personage (1947)

Outstanding Works of Contemporary Art

Galerie Thomas Modern is showing Dine, Fontana, Francis, Graubner, Halley, Knoebel, Motherwell, Polke, Uecker und Warhol

Munich, March 29, 2019

The spectrum of Galerie Thomas Modern includes works of Pop Art, the artists' movement ZERO, US post-war art and American Abstract Expressionism. In addition, the gallery represents individual positions of established German artists after 1945. In the current exhibition "Masterpieces Modern" Galerie Thomas Modern is showing works by Jim Dine, Lucio Fontana, Sam Francis, Gotthard Graubner, Peter Halley, Imi Knoebel, Robert Motherwell, Sigmar Polke, Günther Uecker and Andy Warhol.

Robert Motherwell's *Orange Personage* from 1947 belongs in terms of time and content belongs to an extremely important period for his artistic work. During this period he began to translate Surrealism and Constructivism into the lyrical language of a new, non-representational painting that he was looking for – and thus led the viewer directly to the origins of American Abstract Expressionism.

"Concetti Spaziali" - the space in the picture becomes real

Between 1958 and 1968 Lucio Fontana created the group of works "Concetti Spaziali", the spatial concepts that the artist himself simply called "tagli", "cuts". With the physical penetration of the once two-dimensional and in the figurative representation illusionistic picture surface he destroyed not only the limited representation space of the picture, but finally also the picture function of the representation finally: "(...) from now on we are free to do whatever we want. The

GALERIE THOMAS MODERN

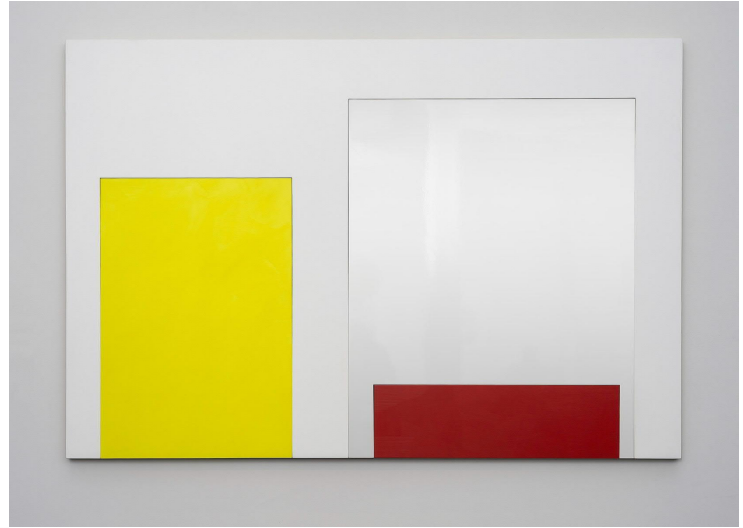
Modern & Contemporary

THOMAS PRESS RELEASE

Surface must not be limited by the edges of the canvas, it extends to the surrounding space," said Fontana in 1967.



Lucio Fontana
Concetto Spaziali, Attesa (1964)



Imi Knoebel
Figur 15 (1985)

Puzzle game with space and perspective

The so-called "figure paintings", which Beuys student Imi Knoebel created from 1985 onwards, thematize the primary question of art: What is an image? And when does a picture become a picture? Knoebel also approaches this problem physically through the mechanical nesting of individual image surfaces, through the liberation of the image, of painting from spatial boundaries. In addition, Knoebel no longer understands the painting as a painted picture surface, but as an object that can become a spatial object of space, extended by a virtual space that lies in the viewer's imagination.

In 2009, Silke Thomas and Raimund Thomas opened a section for modern and contemporary art in their Galerie Thomas, which was founded in 1964: "I am very pleased," says Silke Thomas, "that we can celebrate this anniversary with top-class works of art that not only underscore our varied program, but also tell a phenomenal story in an art historical context. The exhibition will be accompanied by a high-quality catalogue with detailed background information and art historical essays."

**We cordially invite the media representatives
to the exhibition opening on Thursday, April 4, 2019, at 7 pm.
We will also be happy to send you a specimen copy of the catalogue by post.**

About the Gallery

Founded in 1964, Galerie Thomas has become one of the leading galleries for masterpieces of German Expressionism, modernism, and contemporary art. The gallery is located in Munich's art district and has been participating in the following international art fairs for many years: Art Basel, Art Basel Miami Beach, TEFAF Maastricht, Art Cologne, and recently Art Basel Hong Kong. Along with Silke and Raimund Thomas, Heike Grossmann and Jörg Paal serve as directors of the gallery.

GALERIE THOMAS MODERN

Modern & Contemporary

Tuerkenstrasse 16 · 80333 Munich · Germany · Telefon +49-89-29 000 860
Fax +49-89-29 000 866 · modern@galerie-thomas.de · www.galerie-thomas.de

© VG Bild-Kunst, Bonn, 2019
© Galerie Thomas 2019