

**SUMMER 2023**



**GALERIE THOMAS**

All works are for sale. Prices upon request.  
We refer to our sales and delivery conditions.  
Dimensions: height by width by depth.

© Galerie Thomas 2023

© VG Bild-Kunst, Bonn 2023:

Hans Arp, Willi Baumeister, Joseph Beuys, Peter Brüning, Marc Chagall, Eduardo Chillida,  
Christo & Jeanne Claude, Joseph Cornell, Tony Cragg, Jim Dine, Otto Dix, Piero Dorazio,  
Jean Dubuffet, Lyonel Feininger, Günther Förg, Sam Gilliam, Gotthard Graubner, Katharina Grosse,  
Karl Hofer, Hans Hofmann, Jenny Holzer, Robert Indiana, William Kentridge, Yves Klein,  
Imi Knoebel, Alfred Kubin, Fernand Léger, Sol LeWitt, Baltasar Lobo, Markus Lüpertz,  
Ewald Mataré, Henri Matisse, Fausto Melotti, Giorgio Morandi, Gabriele Münter, A. R. Penck,  
Mel Ramos, Neo Rauch, Anselm Reyle, George Rickey, Thomas Schütte, Antoni Tàpies,  
Rosemarie Trockel, Günther Uecker, Fritz Winter, Erwin Wurm

© Fernando Botero 2023 · © The Estate of Lynn Chadwick 2023

© Archivio Dadamaino 2023 · © Fundación Gego, Caracas 2023 · © Peter Halley 2023

© Nachlass Erich Heckel, Hemmenhofen 2023 · © Anselm Kiefer 2023 · © Jeff Koons 2023

© David LaChapelle 2023 · © Jonathan Lasker 2023

© The Estate of Jacques Lipchitz 2023 · © Nachlass Maria Marc 2023

© Successió Miró / VG Bild-Kunst, Bonn 2023 · © The Henry Moore Foundation 2023

© Elisabeth Nay-Scheibler, Köln / VG Bild-Kunst, Bonn 2023 · © Nolde Stiftung Seebüll 2023

© Odili Donald Odita 2023 · © Pechstein – Hamburg / Tökendorf 2023

© Richard Pettibone 2023 · © Gerhard Richter 2023 · © Ulrich Rückriem 2023

© Edward Ruscha 2023 · © Simon Schubert · © Pat Steir 2023

© The Andy Warhol Foundation for the Visual Arts, Inc. / Artists Rights Society (ARS), New York 2023

© Christopher Wool 2023

All other works: the artists, their estates or foundations



cover:

JACQUES LIPCHITZ Reader I

granite, 1919/1971, 125 x 37 x 43 cm / 49 1/4 x 14 5/8 x 17 in.

MAX PECHSTEIN Altes Haus

oil on canvas, 1928, 50 x 66 cm / 19 5/8 x 26 in.



ALEXEJ VON JAWLENSKY  
Large Meditation: Before Night Comes  
oil on linen-finish paper on cardboard, 1936, 25 x 18 cm / 9 <sup>7</sup>/<sub>8</sub> x 7 in.



GABRIELE MÜNTER    Abstract  
oil on cardboard, 1915, 41 x 33 cm / 16 <sup>1</sup>/<sub>8</sub> x 13 in.



ALEXEJ VON JAWLENSKY    Small Abstract Head (Tilted Head)  
oil on linen-finish artist's board, 1934, 22.7 x 17 cm / 9 x 6 <sup>5</sup>/<sub>8</sub> in.



ALEXEJ VON JAWLENSKY    Abstract Head: Slanted Eyes  
oil on canvas on cardboard, 1930, 37.7 x 27.1 cm / 14 <sup>7</sup>/<sub>8</sub> x 10 <sup>2</sup>/<sub>4</sub> in.



ERICH HECKEL    Park Landscape  
oil on canvas, 1910, 67 x 79.3 cm / 26 <sup>3</sup>/<sub>8</sub> x 31 <sup>1</sup>/<sub>4</sub> in.



CHAIM SOUTINE    Landscape at Cagnes  
oil on canvas, 1923-1924, 60 x 73 cm / 23 <sup>5</sup>/<sub>8</sub> x 28 <sup>3</sup>/<sub>4</sub> in.



MARIA MARC    Apple Basket in the Grass  
oil on canvas, c. 1909, 38.5 x 46.5 cm / 15 1/8 x 18 1/4 in.



EWALD MATARÉ    Stehende Kuh (Windkuh)  
bronze, 1923 / lifetime cast, 18.2 x 32 x 12 cm / 7 1/4 x 12 5/8 x 4 3/4 in.



MARC CHAGALL Bouquet multicolore pour Vava à Sils  
gouache, pastel and pencil on paper, 1966, 45 x 33 cm / 17 <sup>7</sup>/<sub>8</sub> x 13 in.



MARC CHAGALL Study for the King David  
oil on canvas, c. 1963, 27 x 21.8 cm / 10 <sup>5</sup>/<sub>8</sub> x 8 <sup>5</sup>/<sub>8</sub> in.



EMIL NOLDE Young Frisian Girl

watercolour on Japan paper, 1925-1930, 46.9 x 34.2 cm / 18 1/8 x 13 3/8 in.



EMIL NOLDE Young Family

oil on canvas, 1949, 70.3 x 56.5 cm / 27 1/2 x 22 1/4 in.





MARC CHAGALL    Nu vert au village  
oil and India ink on canvas, 1980  
35 x 27 cm / 13 ¾ x 10 ⅞ in.



MARC CHAGALL    Le peintre à la Tour Eiffel  
oil on masonite, 1965-1970  
33 x 24 cm / 13 x 9 ½ in.



EMIL NOLDE    Café House Scene  
watercolour, India ink and pencil on Japan paper, 1910  
11.1 x 11 cm / 4 <sup>3</sup>/<sub>8</sub> x 4 <sup>1</sup>/<sub>4</sub> in.



KARL HOFER    Bathing Girls in the Forest  
oil on masonite, 1944, 69.2 x 46.4 cm / 27 <sup>1</sup>/<sub>4</sub> x 18 <sup>1</sup>/<sub>4</sub> in.



ERNST BARLACH    Dancing Old Woman  
bronze, plaster from 1920 / bronze casting from 1979  
48.7 x 26.3 x 20.7 cm / 19 1/8 x 10 3/8 x 8 1/8 in., edition of 15



GUSTAV KLIMT    Standing Woman  
chalk on paper, 1903, 45 x 31 cm / 17 3/4 x 12 1/4 in.



GEORG KOLBE    Japanese Woman  
bronze, 1911, lifetime cast before 1917, height 46.5 cm / 18 1/3 in.



OTTO DIX    Girl with Rose  
gouache, watercolour and pencil on wove paper, 1923  
61 x 48.2 cm / 24 x 19 in.



MAX BECKMANN    Woman with Hat  
pencil on squared notepad paper, 1936, 21 x 14.8 cm / 8 1/4 x 5 7/8 in.



HENRI MATISSE    Femme à la mantille  
pencil on paper, 1922, 40.6 x 25.7 cm / 16 x 10 1/8 in.



HANS (JEAN) ARP    Tête fleurie  
bronze, 1953, 33.8 x 28 cm / 13 1/4 x 11 in., edition of 3



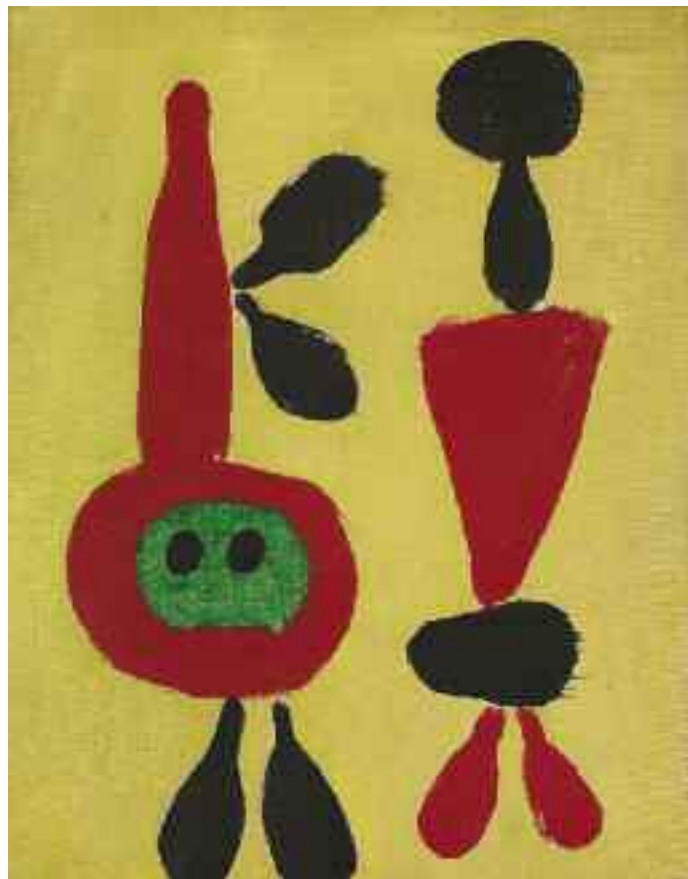
WILLI BAUMEISTER    Mit Amöbenform  
oil on canvas mounted on wood, 1938, 43.5 x 30.5 cm / 17 1/8 x 12 in.



HENRY MOORE Reclining Figure

bronze, conceived in 1936-37 / cast 1959

7 x 6.5 x 13 cm / 2 <sup>3</sup>/<sub>4</sub> x 2 <sup>1</sup>/<sub>2</sub> x 5 in., edition of 6



JOAN MIRÓ Personnage

oil on canvas, 1949, 34.5 x 26.9 cm / 13 <sup>5</sup>/<sub>8</sub> x 10 <sup>5</sup>/<sub>8</sub> in.



JOAN MIRÓ Chanteur Mongol  
bronze, 1971, 24 x 24 x 23.5 cm / 9 1/2 x 9 1/2 x 9 1/8 in.  
edition of 6



JEAN DUBUFFET Trois bédouins  
gouache on paper, 1947-1948, 36.5 x 50 cm / 14 3/8 x 19 3/4 in.

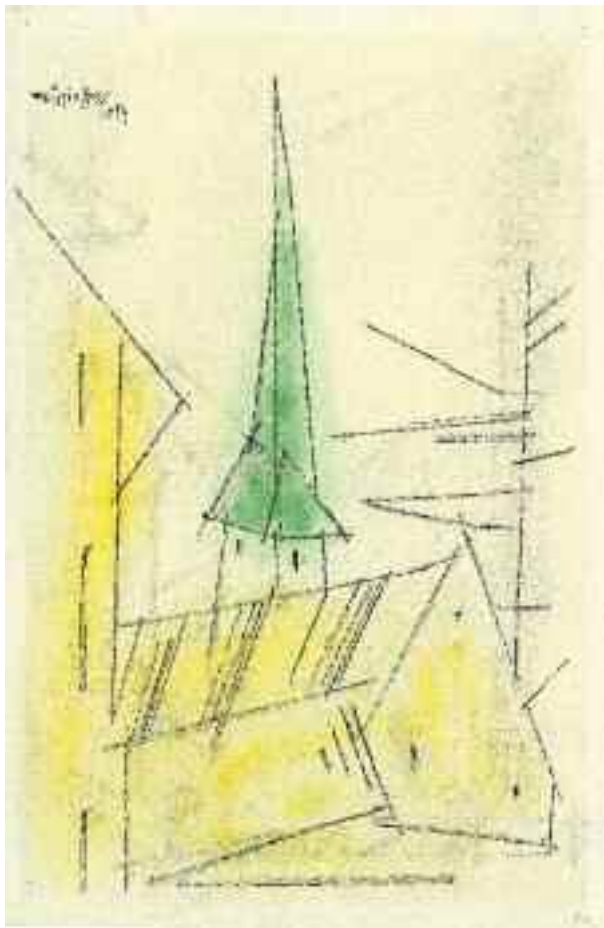




ALFRED KUBIN    Affenliebe  
pen and ink on paper, c. 1900, 17.5 x 12 cm / 6 <sup>7</sup>/<sub>8</sub> x 4 <sup>3</sup>/<sub>4</sub> in.



ALFRED KUBIN    Narrenschiff (Ship Of Fools)  
pen and ink on paper, 1900-1901  
18.5 x 24.5 cm / 7 <sup>3</sup>/<sub>8</sub> x 9 <sup>5</sup>/<sub>8</sub> in.



LYONEL FEININGER    Untitled (Church in Gelmeroda)  
watercolour and Indian ink on laid paper, 1954,  
23.8 x 15.7 cm / 9 <sup>3</sup>/<sub>8</sub> x 6 <sup>1</sup>/<sub>8</sub> in.



LYNN CHADWICK    Standing Woman  
bronze, 1983, 28.5 x 13.2 x 13.8 cm / 11 <sup>1</sup>/<sub>8</sub> x 5 <sup>1</sup>/<sub>8</sub> x 5 <sup>3</sup>/<sub>4</sub> in.,  
edition of 9



HENRY MOORE    Reclining Figure  
bronze, conceived in 1936-37 / cast 1959  
7 x 6.5 x 13 cm / 2 <sup>3</sup>/<sub>4</sub> x 2 <sup>1</sup>/<sub>2</sub> x 5 in., edition of 6



FERNAND LÉGER    Composition orange et noire  
oil on canvas, 1937, 91.7 x 59.5 cm / 36 <sup>1</sup>/<sub>8</sub> x 23 <sup>1</sup>/<sub>2</sub> in.



ERNST WILHELM NAY    Green in Blue  
oil on canvas, 1958, 116 x 88.5 cm / 45 <sup>5</sup>/<sub>8</sub> x 34 <sup>7</sup>/<sub>8</sub> in.



AFTER FERNAND LÉGER    The Builders (Final Version)  
mosaic, 1950/1993, 297 x 197 cm / 117 x 78 in.



LYNN CHADWICK    Sitting Woman  
bronze, 1985-86, 15 x 13 x 11 cm / 5 <sup>7</sup>/<sub>8</sub> x 5 x 4 <sup>1</sup>/<sub>4</sub> in., edition of 9



FRITZ WINTER    Untitled  
oil and collage on paper, 1935, 16.1 x 22.4 cm / 6 <sup>3</sup>/<sub>8</sub> x 8 <sup>7</sup>/<sub>8</sub> in.



BALTASAR LOBO    *A la source*  
bronze, 1989, 58 x 127 x 47 cm / 22 <sup>7</sup>/<sub>8</sub> x 50 x 18 <sup>1</sup>/<sub>2</sub> in., edition of 8 + 4 E.A.



MARKUS LÜPERTZ Article 3 (Constitution Series)  
oil and mixed media on canvas, 2012, 126.5 x 207 cm / 49 5/6 x 81 1/2 in.



ANTONI TÀPIES    Pintura-Collage  
mixed media on canvas, 1964, 33.6 x 55 cm / 13 1/4 x 21 5/8 in.



EDUARDO CHILLIDA    Lurra G-122  
terracotta (chamotte clay), 1989, 23 x 14 x 23 cm / 9 x 5 1/2 x 9 in.





HANS HOFMANN    The Vase  
oil on board, 1946, 35 x 28 cm / 13 3/4 x 11 in.



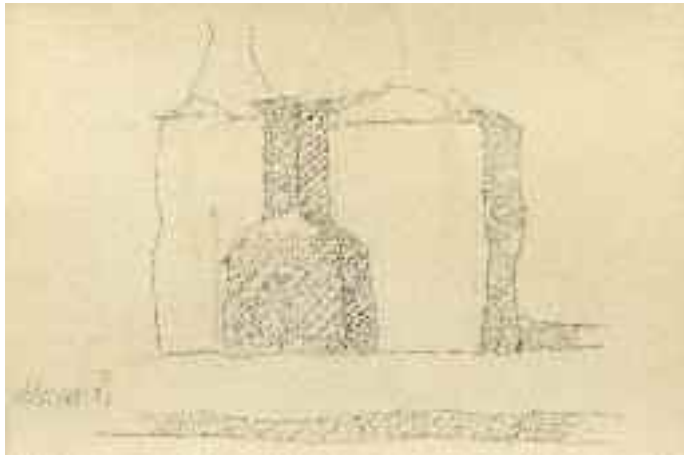
YVES KLEIN    Éponge rose (SE199)  
dry pigment and synthetic resin on natural sponge on metal rod, 1961  
48 x 16 x 4 cm / 19 x 6 3/8 x 1 5/8 in.



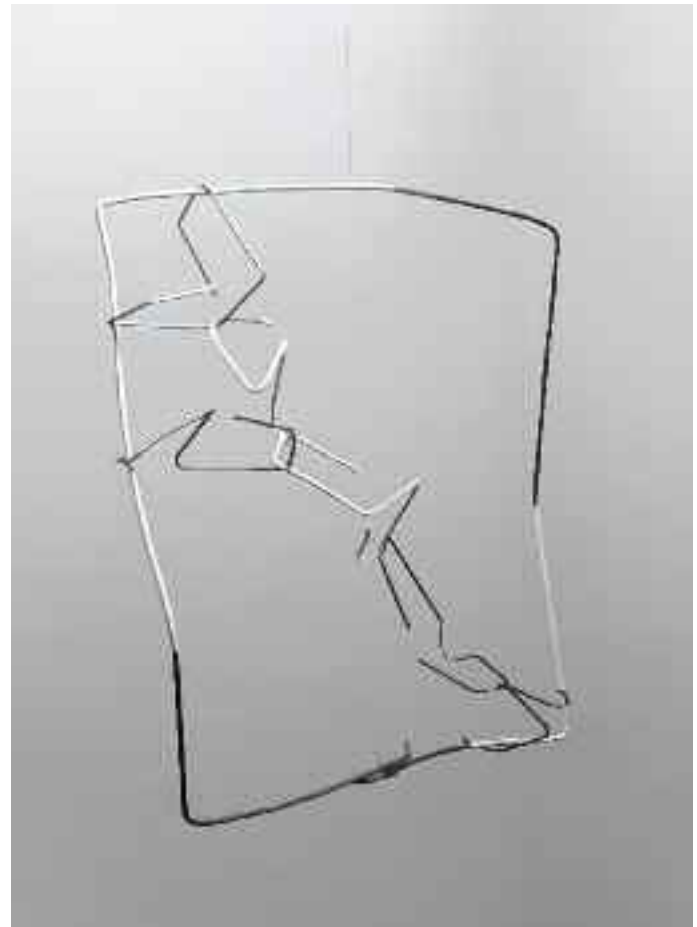
PAUL KLEE    Desert Village  
mixed media on cardboard, 1930, 30 x 46.4 cm / 11 <sup>7</sup>/<sub>8</sub> x 18 <sup>1</sup>/<sub>4</sub> in



YVES KLEIN    Untitled Fire Painting (F-118)  
charred cardboard mounted on board, 1961  
40.5 x 55.9 cm / 15 <sup>7</sup>/<sub>8</sub> x 22 in.



GIORGIO MORANDI    *Natura morta*  
pencil on paper, 1958, 17 x 24.4 cm / 6 <sup>3</sup>/<sub>4</sub> x 9 <sup>5</sup>/<sub>8</sub> in.



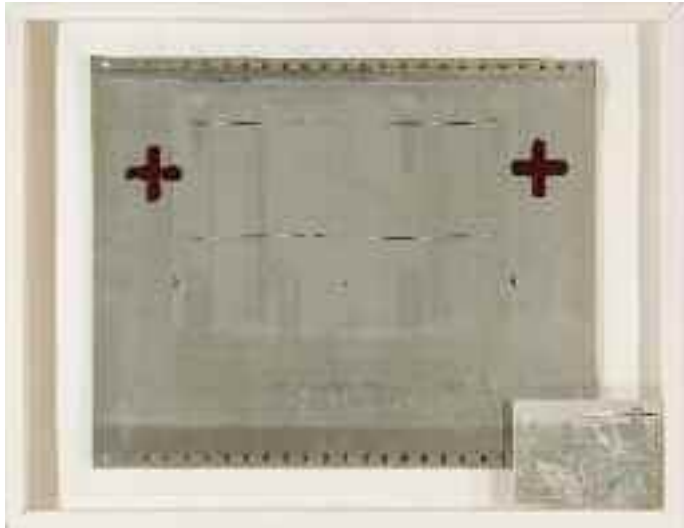
GEGO    *Dibujo sin Papel, Numero 10*  
iron wire, 1983, 24.5 x 23.5 x 5.5 cm / 9 <sup>3</sup>/<sub>4</sub> x 9 <sup>1</sup>/<sub>4</sub> x 2 in.



ANTONI TÀPIES    *Materia sobre tela*  
oil and sand on canvas, 1961  
81.3 x 54.5 cm / 32 1/8 x 21 1/2 in.



ANSELM KIEFER    *Urd, Werdandi, Skuld*  
oil, shellac, sand and pigments on canvas, 1979  
330 x 180 cm / 130 x 70 7/8 in.



JOSEPH BEUYS Eurasienstab über den Alpen II  
aluminium plate, paint and postcard, 1971, 40 x 50 cm / 15 <sup>3</sup>/<sub>4</sub> x 19 <sup>5</sup>/<sub>8</sub> in.



A.R. PENCK Zufall-Freund oder Feind  
acrylic on canvas, 2001, 80 x 100 cm / 31 <sup>1</sup>/<sub>2</sub> x 39 <sup>1</sup>/<sub>8</sub> in.



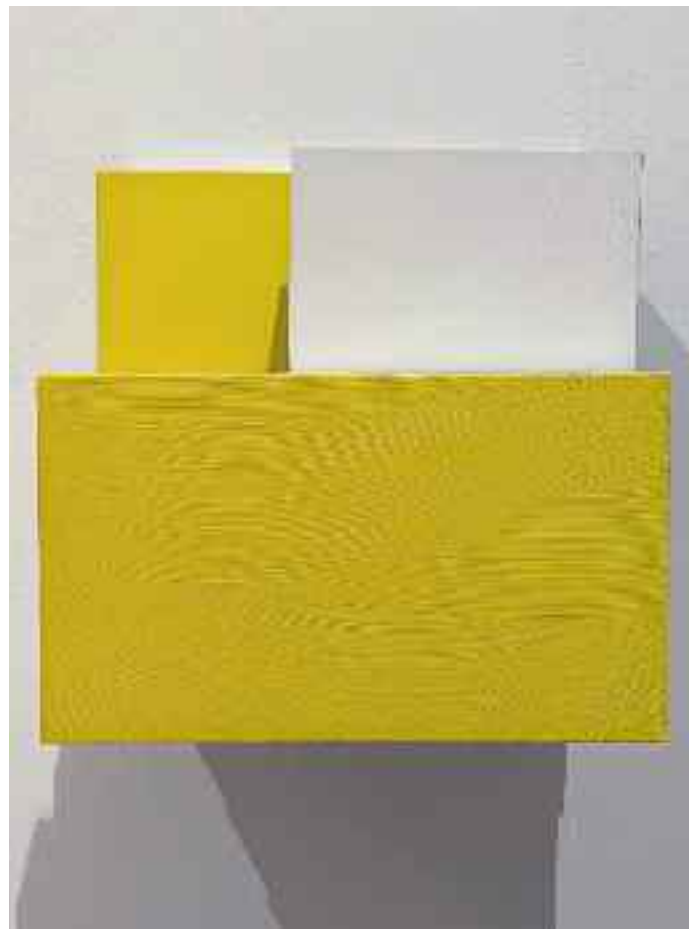
PIERO DORAZIO Untitled  
watercolour on paper, 1963, 32 x 24 cm / 15 <sup>5</sup>/<sub>8</sub> x 9 <sup>1</sup>/<sub>2</sub> in.



FAUSTO MELOTTI Untitled  
graphite and watercolour on plaster, 1974  
26 x 26 x 0.5 cm / 10 <sup>1</sup>/<sub>4</sub> x 10 <sup>1</sup>/<sub>4</sub> x <sup>1</sup>/<sub>8</sub> in.



GEORGE RICKEY One Up One Down Excentric V  
stainless steel, 1983, height 321.3 cm / 126 1/2 in., edition of 3



IMI KNOEBEL Rot-Gelb-Blau C  
acrylic on aluminium, 1994, 17.5 x 17 x 13 cm / 6 7/8 x 6 5/8 x 5 1/8 in.

# THOMAS PRIVATE SALE



**PLEASE  
CONTACT US**

## Galerie Thomas Search Requests

We are on the look-out for specific works for certain collections.  
Please contact us if you would like to sell the following:

Beckmann	painting, Amsterdam exile period
Beuys	Felt Suit
Ernst	"Deux assistants" sculpture
Francis	painting with blue colours / blue circles, before 1980
Gormley	outdoor standing sculpture table top sculpture
Graubner	colourful cushion
Kandinsky	large size painting, Murnau period
Macke	work on paper
Marc	work on paper
Munch	landscape painting
Münter	painting
Nolde	seascape painting or watercolour marsh landscape painting or watercolour
Rauch	small size painting
Richter	painting up to 2 mio. any kind of work
Schiele	work on paper
Uecker	large size "Bewegtes Feld"
Vasarely	small or large size painting
Warhol	substantial painting, no celebrities "Endangered Species" painting flower painting





ULRICH RÜCKRIEM Untitled

granite Bleu de Vire, 1984, 123 x 52 x 52 cm / 48 1/2 x 20 1/2 x 20 1/2 in.



GEORGE RICKEY Double L Excentric Gyrotory II

stainless steel, 1981, 160 x 78.7 x 30.5 cm / 63 x 31 x 12 in., edition of 3



ANSELM KIEFER    *Etroits sont les vaisseaux (Narrow are the Vessels)*  
oil and mixed media on canvas, 1998-2000  
190 x 330 x 38 cm / 74 <sup>7</sup>/<sub>8</sub> x 129 x 15 in.

SAM GILLIAM    Butterflies Are  
acrylic and oil on canvas, 1976, 213.4 x 157.5 cm / 84 x 62 in.





GÜNTHER FÖRG    Untitled (Diptych)  
acrylic on lead on wood, 2001, each 45.5 x 35.6 x 2.5 cm / 17 <sup>7</sup>/<sub>8</sub> x 14 x 1 in.



GÜNTHER FÖRG    Untitled  
acrylic on wood, in artist's frame, 1994, 63.6 x 35.5 cm / 25 x 13 <sup>7</sup>/<sub>8</sub> in.



GOTTHARD GRAUBNER    Untitled  
gouache on paper, 1984, 75 x 56 cm / 29 1/2 x 22 in.



SAM GILLIAM    Tholos Revisited VIII  
acrylic, aluminium and collage on canvas, 1982  
83.8 x 96.7 cm / 33 x 38 in.



GERHARD RICHTER 3.3.94  
oil on cardboard, 1994, 21 x 29.8 cm / 8 1/4 x 11 3/4 in.  
artist's mount 40 x 49 cm / 15 3/4 x 19 1/4 in.



GERHARD RICHTER Untitled (18.3.89)  
oil on paper mounted on original artist's board, 1989  
sheet: 21 x 29.7 cm / 8 1/4 x 11 5/8 in.  
artist's board: 36.2 x 44.2 cm / 14 1/4 x 17 3/8 in.



ANSELM KIEFER    Farnwald (Fern-Forest)  
lead and animal bones on gelatin silver photograph in glazed steel frame  
1991, 131.8 x 169.8 cm / 51  $\frac{7}{8}$  x 66  $\frac{7}{8}$  in.

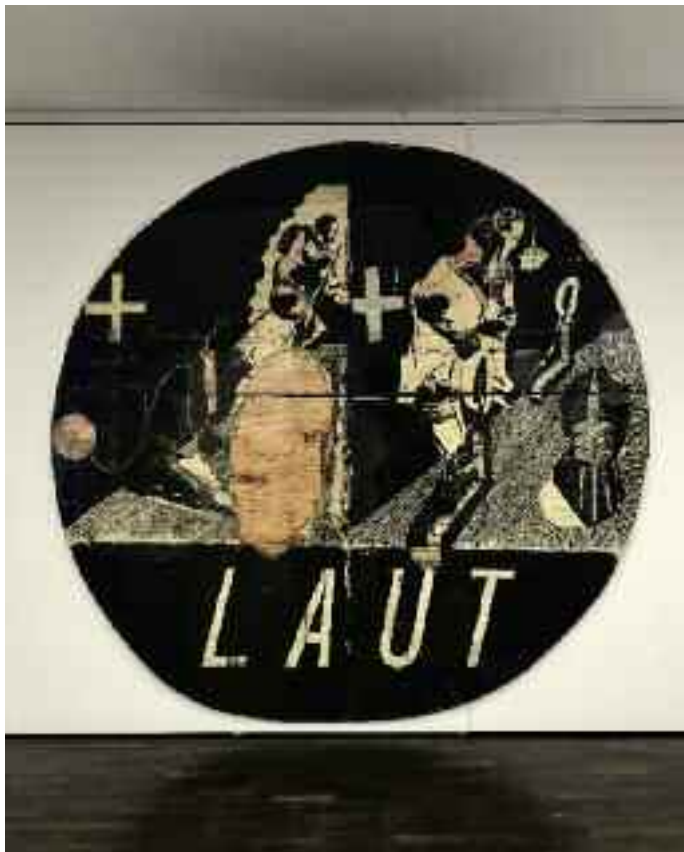
NEO RAUCH Die Fährte  
oil on canvas, 2007, 248.9 x 200.7 cm / 98 x 79 in.





NEO RAUCH    Lamm  
oil on canvas, 2006, 280 x 210 cm / 110 1/4 x 82 3/4 in.





NEO RAUCH LAUT

oil on paper on wood, 1993, 4 panels, 330 x 327 cm / 130 x 128 3/4 in.



ROSEMARIE TROCKEL Untitled (Pompon)

wool, styrofoam, puppet, 1999, diameter 185 cm / 72 7/8 in.



SIMON SCHUBERT Untitled (Three Windows)  
graphite on paper, 2022, 70 x 50 cm / 27 <sup>5</sup>/<sub>8</sub> x 19 <sup>3</sup>/<sub>4</sub> in.



CHRISTOPHER WOOL Untitled  
vinyl flashe paint on board, 1984, 35.6 x 35.6 cm / 14 x 14 in.



WILLIAM KENTRIDGE    Untitled (Telephone)  
bronze, 1999, 25 x 19 x 25 cm / 9 7/8 x 7 1/2 x 9 7/8 in.  
edition of 14



ANSELM KIEFER    The Argonauts  
lead, 2014, 19 x 23 x 5 cm / 7 1/2 x 9 x 2 in.  
unique, from a series of 90 works



PAT STEIR Untitled (Red on Blue)  
oil on canvas, 1995, 25.4 x 25.4 cm / 10 x 10 in.



JIM DINE Nina's Song #5  
acrylic, sand and charcoal on canvas, 2013  
106.7 x 76.2 cm / 42 x 30 in.



DAVID LACHAPELLE    Flaccid Passion  
C-Print on Alu-Dibond, 2008-2011, 152.4 x 124.9 cm / 60 x 45 <sup>3</sup>/<sub>8</sub> in.  
edition of 3 + 2 AP



ANSELM REYLE    Untitled  
mixed media, acrylic glass, 2022  
101 x 86.8 x 23 cm / 39 <sup>3</sup>/<sub>4</sub> x 34 <sup>1</sup>/<sub>4</sub> x 9 in.



FERNANDO BOTERO    Sleeping Woman  
bronze, 1999, 32 x 63 x 26 cm / 12 1/2 x 24 7/8 x 10 1/4 in.  
edition of 6 + 2 AP

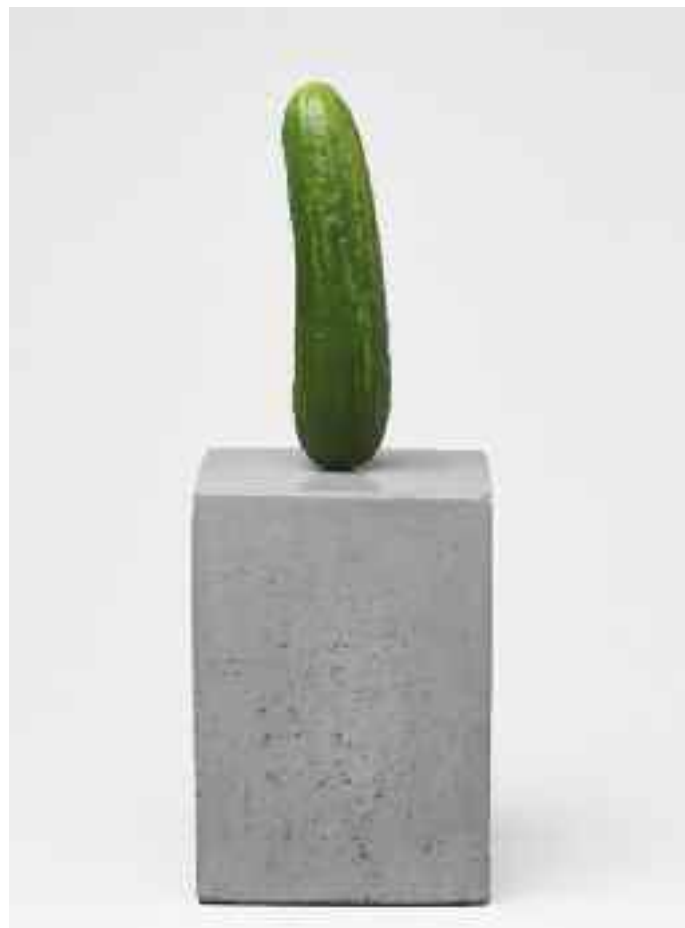


FERNANDO BOTERO    Still Life with Playing Cards  
oil on canvas, 1994, 102.3 x 125.8 cm / 40 1/4 x 49 1/4 in.



THOMAS SCHÜTTE Skatbrüder

bronze, 2022, height of each c. 20 cm / 8 in., edition of 35 + 5 AP



ERWIN WURM Untitled (Self Portrait as Pickle)  
iron and acrylic, 2017

height: 14 cm / 5 1/2 in., diameter: 3 cm / 1 1/8 in., unique





ED RUSCHA Le Sabre

dry pigment and pencil on paper, 2004, 30.7 x 23.5 cm / 12 1/8 x 9 1/4 in.



RICHARD PETTIBONE

Andy Warhol, Lavender Disaster, 1964

acrylic and silkscreen ink on canvas, in artist's frame, 1969  
12.9 x 17 x 0.9 cm / 5 1/8 x 6 3/4 x 1/2 in. (size of the frame)



ANTONI TÀPIES 1,2,3,4  
oil on canvas, 1974, 81 x 100 cm / 31  $\frac{7}{8}$  x 39  $\frac{1}{3}$  in.



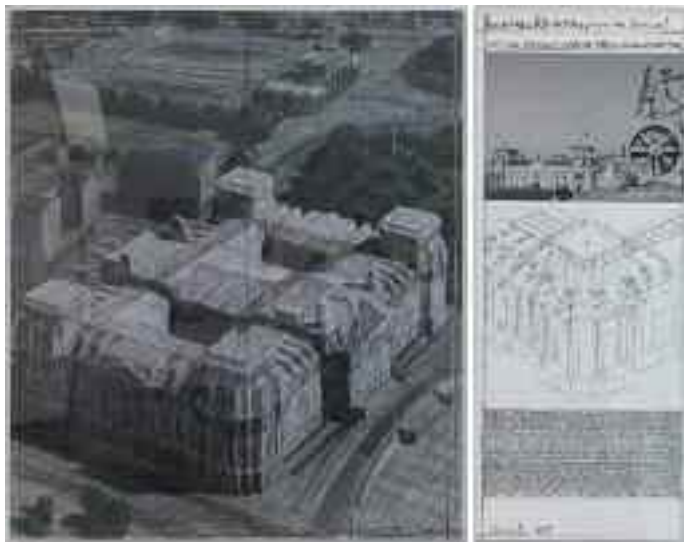
A.R. PENCK Man, Scorpio at night  
oil on canvas, 1993, 30 x 40 cm / 11  $\frac{7}{8}$  x 15  $\frac{3}{4}$  in.



MEL RAMOS

Suzie Soup, Sonja Soup, Sandy Soup

oil on canvas, 2007 each, 101.6 x 76.2 cm / 40 x 30 in. each



CHRISTO & JEANNE-CLAUDE    Wrapped Reichstag  
collage, two-part, 1995, 77.5 x 76.5 cm and 77.5 x 30.5 cm  
30 1/2 x 30 1/8 in. and 30 1/2 x 12 in.



PETER BRÜNING    Untitled  
oil on canvas, c. 1960/1961, 130 x 97 cm / 51 1/4 x 38 1/4 in.



JEFF KOONS Seated Ballerina

polychromed wood, 2015, 45.8 x 43.5 x 24.8 cm / 18 x 17 x 9 3/4 in.

edition of 50 + 10 AP



RICHARD PETTIBONE

Andy Warhol, Marilyn, 1964, L.H.O.O.Q., #1

oil and silkscreen ink on canvas, 2002, 18.4 x 17.1 cm / 7 1/4 x 6 3/4 in.



JOSEPH CORNELL    Untitled (Yellow Bird Habitat)  
glass, wood, wood shavings, paint, plastic, metal and artificial bird  
c. 1958, 32.7 x 21.3 x 12.7 cm / 12 <sup>7</sup>/<sub>8</sub> x 8 <sup>3</sup>/<sub>8</sub> x 5 in.



ROBERT INDIANA    LOVE Purple/Red  
aluminium, painted purple and red, conceived in 1966/executed in 2000  
45 x 45 x 22 cm / 18 x 18 x 9 in., edition of 8 + 4 A.P.



LYNN CHADWICK    Beast VII

bronze, 1956 / cast 1999, 63.5 x 112 x 22 cm / 25 x 44 x 8 5/8 in.

edition of 9



ROBERT INDIANA    Hope, Red/Blue

aluminium, painted red and blue, 2009,

91.4 x 91.4 x 45.7 cm / 36 x 36 x 18 in., edition of 8 + 1 AP



SOL LEWITT  
Wall Drawing #900 (Colour bands and black blob)  
acrylic paint, 1999, dimensions variable





ODILI DONALD ODITA    Origin Story

acrylic latex paint on aluminum-core fabricated wood panel with reconstituted  
110 wood veneer, 2022, 233.7 x 137 x 4.5 cm / 92 x 54 x 1 ¾ in.



KATHARINA GROSSE    Untitled

acrylic and soil on canvas, 2009  
150 x 121 cm / 59 x 47 ½ in.



JONATHAN LASKER    If (infini) were 8  
oil on canvas, 1998, 27.5 x 35.5 cm / 10 <sup>7</sup>/<sub>8</sub> x 14 in.



ANDY WARHOL    Campbell's Soup II (Chicken 'N Dumplings)  
silkscreen on paper, 1969, 88.9 x 58.4 cm / 35 x 23 in.  
edition of 250 + 26 AP



PIERO DORAZIO    Pilota 19 II  
oil on canvas, 1960, 25.3 x 30.4 cm / 10 x 12 in.



PETER HALLEY    The Division  
acrylic, fluorescent acrylic and Roll-A-Tex on canvas, 2022  
203 x 171 x 10 cm / 80 x 67 1/2 x 3 7/8 in.



TONY CRAGG    Type Face  
bronze, 2021, 32 x 24 x 11 cm / 12 1/2 x 9 1/2 x 4 3/8 in., edition of 32



DADAMAINO    La ricerca del colore  
tempera on canvas board in artist's frame, 1967  
10 works, each 21.2 x 21.2 cm / 8 3/8 x 8 3/8 in.

## GERMAN EXPRESSIONISM

### BRÜCKE

Erich Heckel  
Ernst-Ludwig Kirchner  
Otto Mueller  
Emil Nolde  
Max Pechstein  
Karl Schmidt-Rottluff

### BLAUER REITER

Heinrich Campendonk  
Alexej Jawlensky  
Wassily Kandinsky  
Paul Klee  
August Macke  
Franz Marc  
Gabriele Münter  
Marianne von Werefkin

### BAUHAUS

Josef Albers  
Lyonel Feininger  
Wassily Kandinsky  
Paul Klee  
Oskar Schlemmer

## CLASSIC MODERN

Alexander Archipenko  
Jean Arp  
Ernst Barlach  
Max Beckmann  
Alexander Calder  
Marc Chagall  
Robert Delaunay  
Otto Dix  
Jean Dubuffet  
Max Ernst  
George Grosz  
Fernand Léger  
Max Liebermann  
Gerhard Marcks  
Henri Matisse  
Joan Miró  
Edvard Munch  
Pablo Picasso  
Egon Schiele  
Kurt Schwitters  
Chaim Soutine

## GALERIE THOMAS

Expressionism & Classic Modern

Tuerkenstrasse 16 · 80333 Munich · Germany · Phone +49-89-29 000 80  
Fax +49-89-29 000 888 · info@galerie-thomas.de · www.galerie-thomas.de

## ZERO

Lucio Fontana  
Yves Klein  
Adolf Luther  
Heinz Mack  
Piero Manzoni  
Otto Piene  
Günther Uecker

### POST-WAR

Joseph Beuys  
Eduardo Chillida  
Sam Francis  
Gottthard Graubner  
Hans Hofmann  
Joan Mitchell  
Ernst Wilhelm Nay  
Louise Nevelson  
Nam June Paik  
Serge Poliakoff  
Robert Rauschenberg  
George Rickey  
George Segal  
Frank Stella  
Cy Twombly  
Victor Vasarely

## GALERIE THOMAS MODERN

Modern & Contemporary

Tuerkenstrasse 16 · 80333 Munich · Germany · Phone +49-89-29 000 860  
Fax +49-89-29 000 866 · modern@galerie-thomas.de · www.galerie-thomas.de

## POP ART

Jim Dine  
Robert Indiana  
Roy Lichtenstein  
Andy Warhol  
Tom Wesselmann

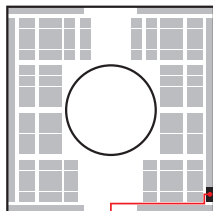
### CONTEMPORARY

Georg Baselitz  
Peter Blake  
Fernando Botero  
Chuck Close  
Peter Halley  
Rebecca Horn  
Anselm Kiefer  
Imi Knoebel  
Sigmar Polke  
Marc Quinn  
Gerhard Richter  
Simon Schubert

# GALERIE THOMAS MODERN

We are looking forward to welcoming you at Art Basel 2023:

Art Basel  
Basel



June 12 - 18

**Art Basel**

Booth G16

**G16**

**Entrance**

See you in Seoul!

Kiaf  
SEOUL

September 6 - 9, 2023

**KIAF Seoul 2023**

Tuerkenstrasse 16 · 80333 Munich · Germany  
Phone +49-89-29 000 80 · Fax +49-89-29 000 888  
info@galerie-thomas.de · www.galerie-thomas.de

# GALERIE THOMAS