

AMERICAN INTERNATIONAL FINE ART FAIR

PALM BEACH 2010



GALERIE THOMAS

Prices upon request. We refer to our sales and delivery conditions.
Measurements: height by width by depth.

For detailed information on the works please see page 33-35.

© Galerie Thomas 2010 and VG Bildkunst

cover: ROBERT INDIANA Hope

We have opened a new location!

515 square meters for Modern Art!
We are looking forward to seeing you at:

GALERIE THOMAS MODERN

Modern & Contemporary



Tuerkenstrasse 16 · 80333 Munich/Germany
Phone +49-89-29 000 860 · Telefax +49-89-29 000 866
Mail: modern@galerie-thomas.de · Internet: www.galerie-thomas.de



GEORGE SEGAL Fragment – Venus Gesture



JOSEF BEUYS Felt suit



ANSELM KIEFER Freemason



LOUISE NEVELSON

Night Zag XIV



WILFREDO LAM Sans Titre



ANSELM KIEFER Remains of the sun



MARK DI SUVERO Coeur de chouette



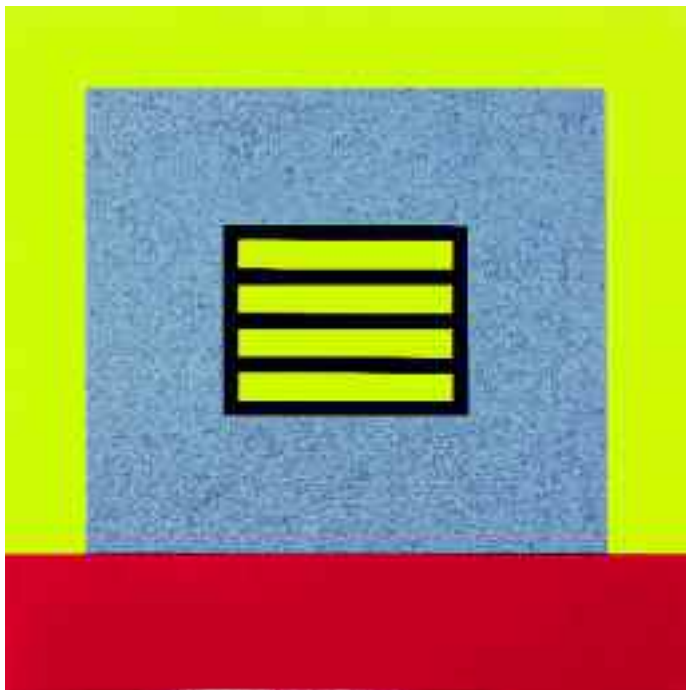
ANDY WARHOL Guns



JIM DINE Colourful Parrot at Home



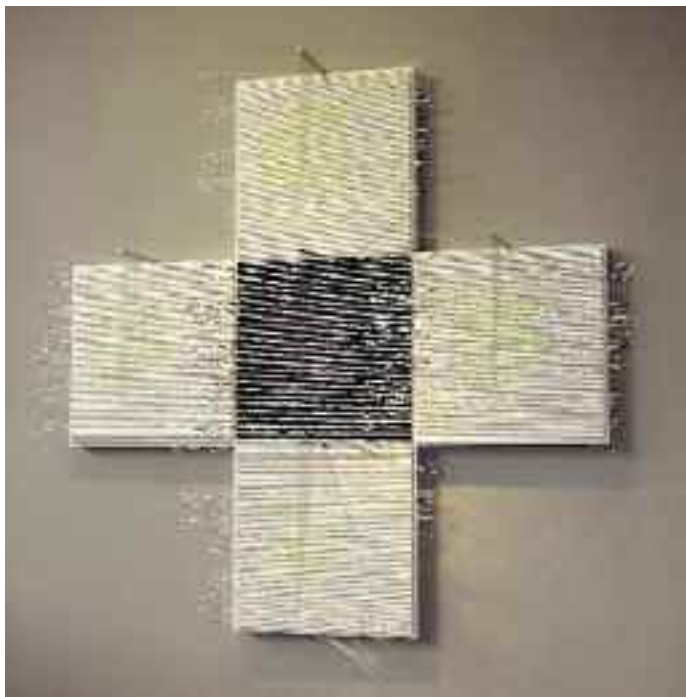
SAM FRANCIS When White



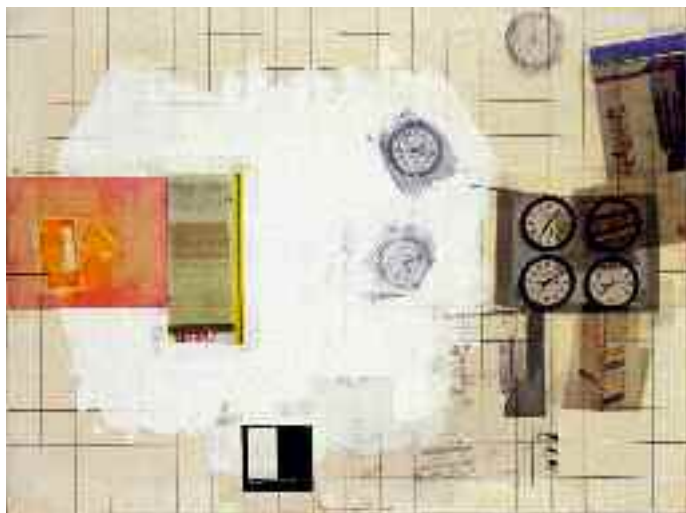
PETER HALLEY Blue Prison



ROBERT INDIANA Love



JESÚS RAFAEL DE SOTO Cruz cobalto y limón



ROBERT RAUSCHENBERG

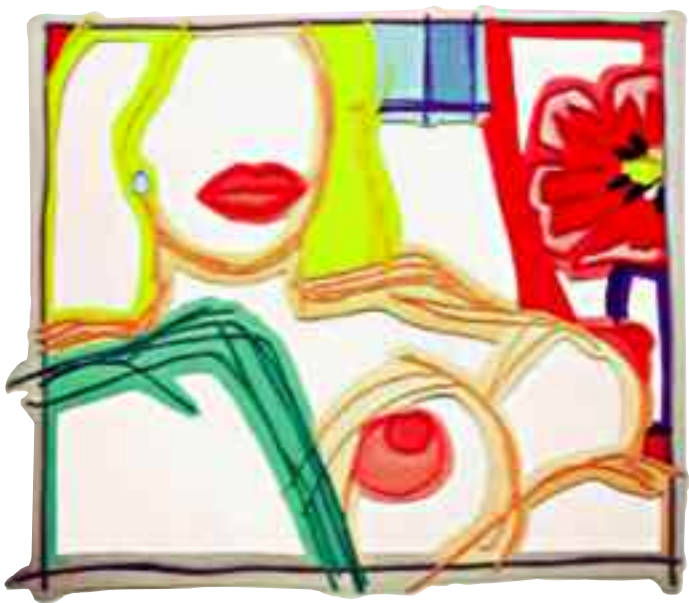
Paragraph III



DAVID SALLE Blue Flowers



MARC QUINN Labrador Sound Thaw



TOM WESSELMANN From Nude Painting Print



DAMIEN HIRST

In a Spin, the Action of the World on Things



FERNANDO BOTERO Circus Act



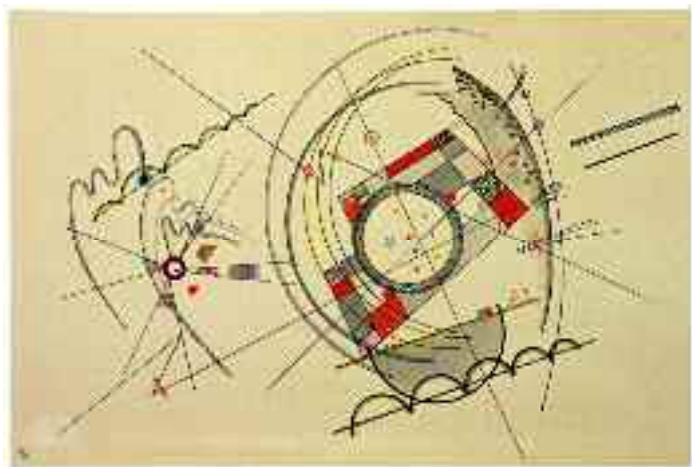
FERNANDO BOTERO Woman on a Horse



ALEXANDER ARCHIPENKO Seated Woman



JOSEF ALBERS Homage to the Square – Spring Tide



WASSILY KANDINSKY Coloured Lines



FERNAND LÉGER Etude pour le Grand Remorqueur



JOAN MIRÓ Tête au croissant



GEORGE GROSZ Self-Portrait with Model in the Studio



JOAN MIRÓ Painting (Woman in Front of the Sun)



ALEXEJ JAWLENSKI Abstract Head



KEES VAN DONGEN The mill



PIERRE BONNARD La Roulotte à Vernonnet



EMIL NOLDE Sea with Black Steamship

- 23 **JOSEF ALBERS** Homage to the Square – Spring Tide
oil on masonite, 1956, 40 x 40 in. (101.6 x 101.6 cm)
- 22 **ALEXANDER ARCHIPENKO** Seated Woman
bronze; 1912 / posthumous cast c. 1970
15 $\frac{3}{4}$ x 7 $\frac{5}{8}$ x 6 $\frac{7}{8}$ in. (39.9 x 19.4 x 17.5 cm)
- 3 **JOSEF BEUYS** Felt suit
felt, 1970, 66 $\frac{7}{8}$ x 39 $\frac{3}{8}$ in. (170 x 100 cm)
Edition 100 + 10 h.c.
- 31 **PIERRE BONNARD** La Roulotte à Vernonnet
watercolour and pencil on paper, on canvas, c. 1930
13 $\frac{3}{4}$ x 17 in. (34.8 x 42.8 cm)
- 20 **FERNANDO BOTERO** Circus Act
oil on canvas, 2008, 50 x 39 in. (127 x 99 cm)
- 21 Woman on a Horse
watercolour on paper, 2007, 41 $\frac{3}{8}$ x 29 $\frac{1}{2}$ in. (105 x 75 cm)
- 10 **JIM DINE** Colourful Parrot at Home
oil enamel paint and patina on bronze, 2007
66 x 38 x 26 in. (167.6 x 96.5 x 66 cm)
- 11 **SAM FRANCIS** When White (SFP 63-19)
oil on canvas, 1963-1964, 98 x 76 $\frac{1}{8}$ in. (249 x 193.4 cm)
- 27 **GEORGE GROSZ** Self-Portrait with Model in the Studio
watercolour, gouache, pen and India ink on paper, 1930-1937
21 $\frac{1}{4}$ x 18 $\frac{1}{8}$ in. (54.6 x 46 cm)
- 12 **PETER HALLEY** Blue Prison
mixed media on canvas, 2007, 30 x 30 in. (76.2 x 76.2 cm)
- 19 **DAMIEN HIRST**
In a Spin, the Action of the World on Things
mixed media on board on fibreboard, 2002
46 $\frac{1}{2}$ x 37 $\frac{7}{8}$ in. (118 x 96.5 cm)
- cover **ROBERT INDIANA** Hope
aluminium, polychrome, 2009
18 x 18 x 9 inch (46 x 46 x 23 cm), Edition of 9 + 1 AP

- 13 **ROBERT INDIANA** Love
aluminium, polychrome, 1966/1997
36 x 36 x 18 in. (91.4 x 91.4 x 45.7 cm), Edition of 6 + 4 AP
- 29 **ALEXEJ VON JAWLENSKY** Abstract Head
oil on linenstructured artist board, 1927
10 $\frac{3}{8}$ x 8 $\frac{1}{4}$ in. (26.3 x 21 cm)
- 24 **WASSILY KANDINSKY** Coloured Lines
watercolour and Indian ink on paper on cardboard, 1924
11 $\frac{7}{8}$ x 18 in. (30.2 x 45.7 cm)
- 4 **ANSELM KIEFER** Freemason
gouache and chalk over photo collage in object box
2004-2008, 59 $\frac{7}{8}$ x 45 $\frac{5}{8}$ in. (152 x 116 cm)
- 7 Remains of the sun
mixed media on photograph on board, 1998
42 $\frac{3}{8}$ x 64 $\frac{3}{4}$ in. (107.5 x 164.5 cm)
- 6 **WILFREDO LAM** Sans Titre
watercolour on paper, 1947, 12 x 19 in. (30.5 x 48.2 cm)
- 25 **FERNAND LÉGER** Etude pour le Grand Remorqueur
watercolour and gouache on Arches, 1923
12 $\frac{1}{4}$ x 19 $\frac{5}{8}$ in. (31 x 50 cm)
- 28 **JOAN MIRÓ** Painting (Woman in Front of the Sun)
oil, rope and wire on canvas, 1949
8 $\frac{5}{8}$ x 6 $\frac{1}{4}$ x 1 in. (22 x 16 x 2.5 cm)
- 26 **Tête au croissant**
bronze, 1977, 14 $\frac{1}{2}$ x 7 $\frac{1}{2}$ x 7 $\frac{7}{8}$ in. (37 x 19 x 20 cm)
Edition of 6
- 5 **LOUISE NEVELSON** Night Zag XIV
wood, painted black, 1973
34 $\frac{1}{2}$ x 39 x 6 in. (87.6 x 99 x 15.2 cm)
- 32 **EMIL NOLDE** Sea with Black Steamship
watercolour and opaque white on Japan paper, 1946
9 x 10 $\frac{1}{2}$ in. (22.8 x 26.9 cm)

- 17 **MARC QUINN** Labrador Sound Thaw
oil on canvas, 2009, 102 $\frac{3}{4}$ x 66 $\frac{1}{2}$ in. (261 x 169 cm)
- 15 **ROBERT RAUSCHENBERG** Paragraph III
pencil, gouache and collage on artist board, 1966
15 $\frac{1}{4}$ x 20 $\frac{3}{8}$ in. (38.9 x 50.9 cm)
- 16 **DAVID SALLE** Blue Flowers
oil on canvas, 2005, 56 x 90 in. (142.4 x 228 cm)
- 2 **GEORGE SEGAL** Fragment – Venus Gesture
bronze, 1970, 24 x 12 $\frac{1}{4}$ x 7 in. (70 x 31.12 x 17.78 cm)
Edition of 9
- 14 **JESÚS RAFAEL DE SOTO** Cruz cobalto y limón
metal wires, paint and wood, 1975
60 $\frac{5}{8}$ x 60 $\frac{5}{8}$ in. (154 x 154 cm)
- 8 **MARK DI SUVERO** Coeur de chouette
steel / 2 parts, 1993
23 $\frac{5}{8}$ x 19 $\frac{3}{4}$ x 15 $\frac{3}{4}$ in. (60x50x40 cm), unique piece
- 30 **KEES VAN DONGEN** The mill
gouache and watercolour on laid paper, without year
14 x 20 in. (35.7 x 50.6 cm)
- 9 **ANDY WARHOL** Guns
synthetic polymer paint and silkscreen ink on canvas, 1981-82
16 x 19 $\frac{7}{8}$ in. (40.5 x 50.5 cm)
- 18 **TOM WESSELMANN**
From Nude Painting Print (Double Layer)
oil on steelcut, 1979/98, 31 x 39 in. (78.7 x 99 cm)

THOMAS GOES *MODERN* ...

POP ART

Jim Dine
Robert Indiana
Roy Lichtenstein
Claes Oldenburg
Robert Rauschenberg
James Rosenquist
Frank Stella
Tom Wesselmann
Andy Warhol

US POST WAR

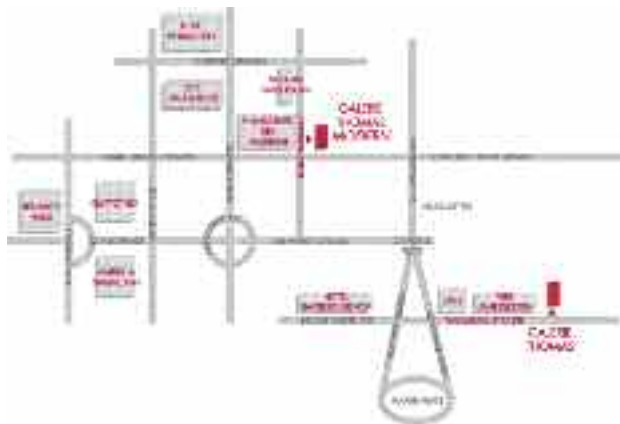
Sam Francis
Adolph Gottlieb
Hans Hofmann
Willem de Kooning
George Rickey
George Segal

INTERNATIONAL

Joseph Beuys
Georg Baselitz
John Chamberlain
Gottard Graubner
Anselm Kiefer
Sigmar Polke
Gerhard Richter
Cy Twombly

CONTEMPORARY

Wim Delvoye
Peter Halley



GALERIE THOMAS MODERN

Modern & Contemporary

... AND STAYS CLASSIC

GERMAN EXPRESSIONISM

BRÜCKE

Erich Heckel
Ernst-Ludwig Kirchner
Otto Mueller
Emil Nolde
Max Pechstein
Karl Schmidt-Rottluff

BLAUER REITER

H. Campendonk
Alexej Jawlensky
Wassily Kandinsky
Paul Klee
August Macke
Franz Marc
Gabriele Münter

BAUHAUS

Lyonel Feininger
Wassily Kandinsky
Paul Klee
Oskar Schlemmer

CLASSICAL MODERNISM

Max Beckmann
Lovis Corinth
Otto Dix
George Grosz
Oskar Kokoschka
Max Liebermann
Egon Schiele
Kurt Schwitters

Jean Arp
Alexander Calder
Marc Chagall
Robert Delaunay

Max Ernst
Fernand Léger
René Magritte
Henri Matisse
Joan Miró
Edvard Munch
Pablo Picasso
Chaim Soutine

MODERN

Fernando Botero
Jean Dubuffet
Knopp Ferro
Alberto Giacometti
Ernst Wilhelm Nay
Louise Nevelson
Serge Poliakoff
Arnaldo Pomodoro
Antoni Tàpies
Victor Vasarely
Fritz Winter

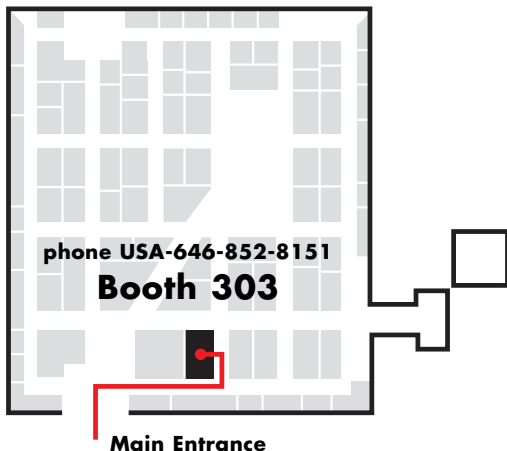
ZERO

Arman
Lucio Fontana
Yves Klein
Piero Manzoni
Jesús Rafael Soto
Günther Uecker

GALERIE THOMAS

Expressionism & Classic Modern

HERE WE ARE:



**Palm Beach County Convention Center
650 Okeechobee Boulevard
West Palm Beach, Florida 33401**

February 3 - 8, 2010

**Opening hours: Daily from 12 to 7 pm
Monday, February 8, from 12 to 6 pm**

Maximilianstrasse 25 · 80539 Munich/Germany
Phone +49-89-29 000 80 · Fax +49-89-29 000 888
info@galerie-thomas.de · www.galerie-thomas.de

GALERIE THOMAS