

AMERICAN INTERNATIONAL FINE ART FAIR

PALM BEACH 2009



GALERIE THOMAS

Prices upon request. We refer to our sales and delivery conditions.
Measurements: height by width by depth.

For detailed information on the works please see page 36-38.

© Galerie Thomas 2009

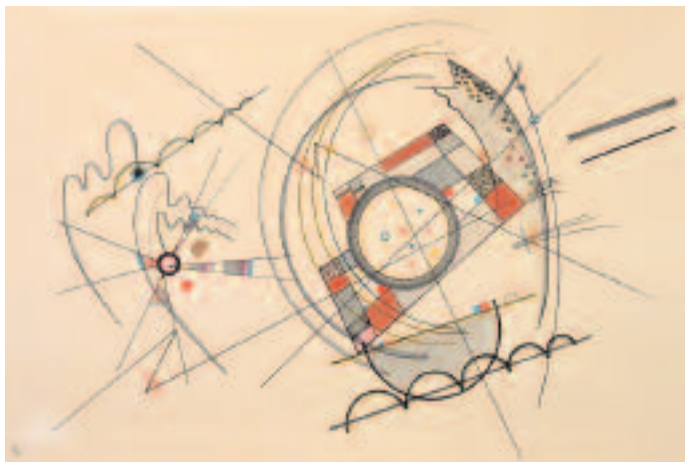
cover:

TOM WESSELMANN

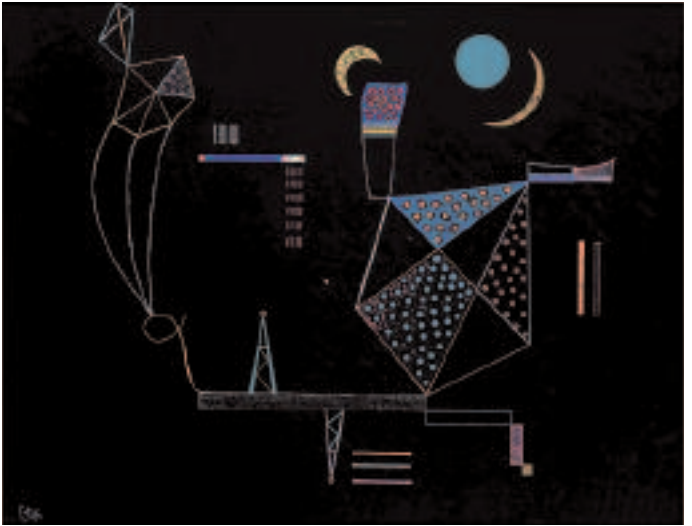
Study for Bouquet with Blue Shadow (99-1)



WASSILY KANDINSKY Walking Couple



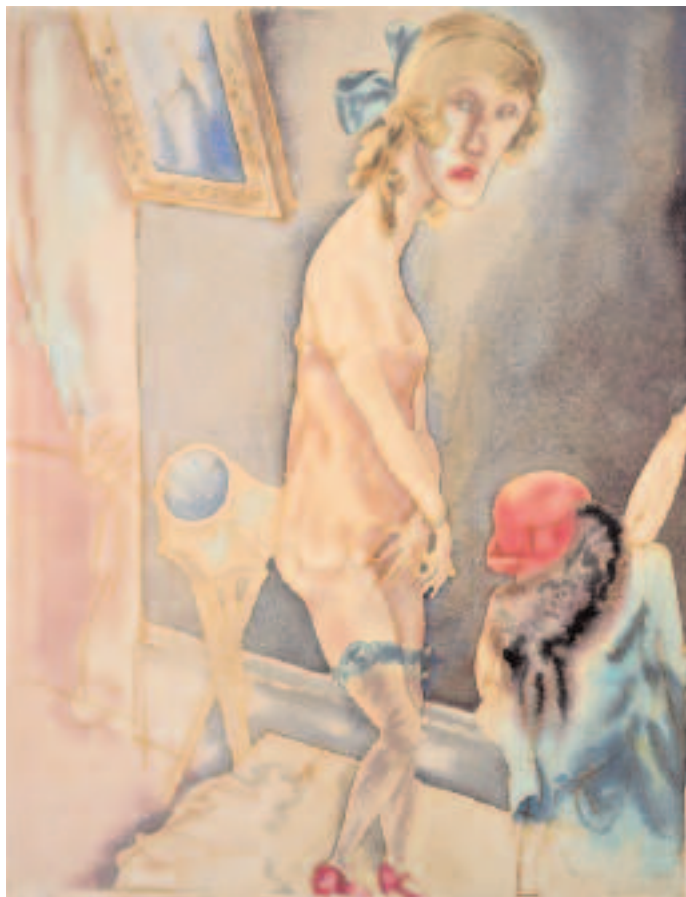
WASSILY KANDINSKY Coloured Lines



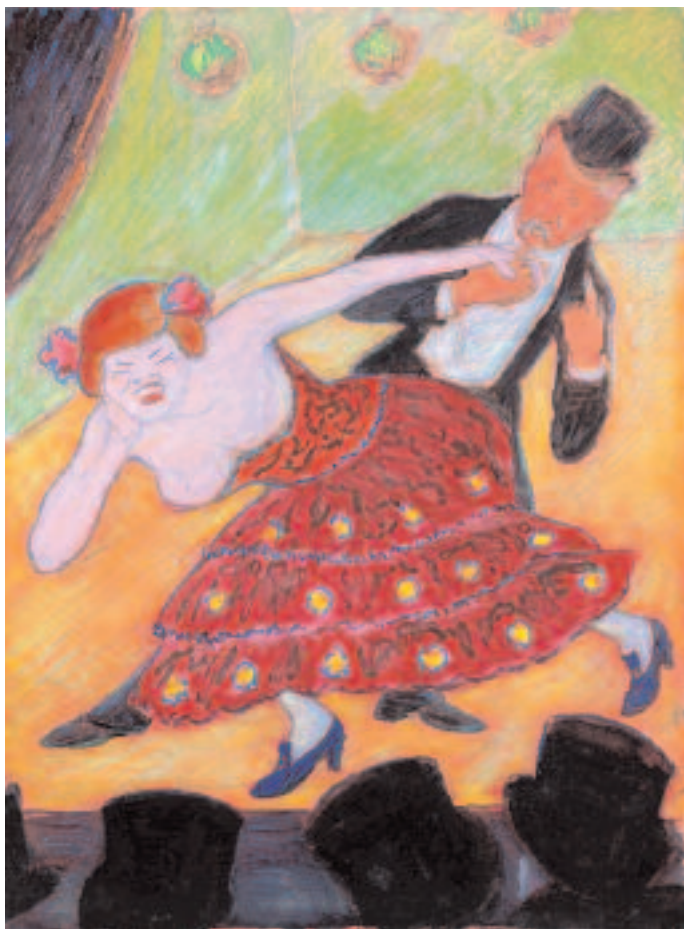
WASSILY KANDINSKY Little Point



GEORGE GROSZ An Evening in Berlin



GEORGE GROSZ Lady Hamilton



MARIANNE VON WEREFKIN

Dancing Couple



JEAN DUFY L'écuyère au cirque Medrano



MAX ERNST Les patineurs



ALEXEJ VON JAWLENSKY

Abstract Head – Sunrise



PIERRE BONNARD

La Roulotte à Vernonnet



EMIL NOLDE Palmtrees on the Beach



HEINRICH CAMPENDONK

Cat in Mountain Landscape



FRANZ MARC Green Horse



EMIL NOLDE Sea with Black Steamship



EMIL NOLDE Clematis and Dahlias



PABLO PICASSO Nu couché



HENRI DE TOULOUSE-LAUTREC

Partie de Campagne ou La Charette Anglaise



JOAN MIRÓ Hommage d'amitié



JOAN MIRÓ Painting (Woman in Front of the Sun)



JOAN MIRÓ Nocturne

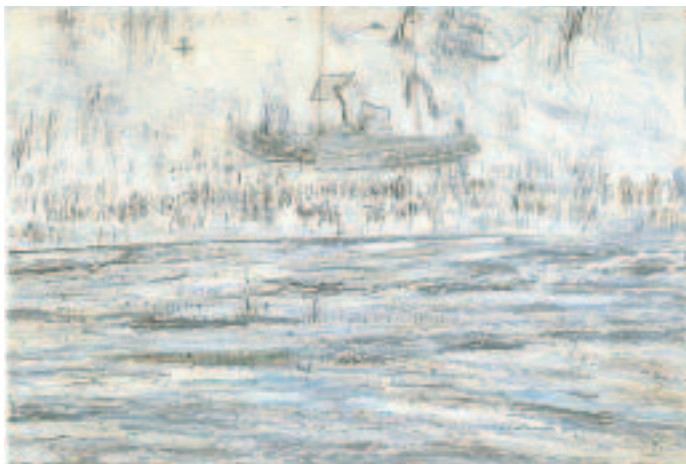


JOAN MIRÓ Femme, oiseau, étoile



LOUISE NEVELSON

Southern Shores XXIII



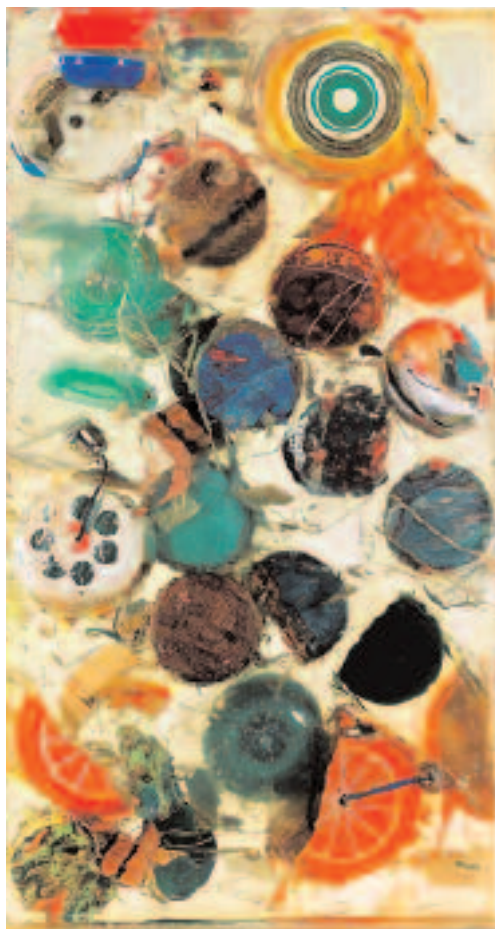
ANSELM KIEFER *Merkaba*



OSCAR DOMINGUEZ Tête de taureau à la fleche



WIFREDO LAM Red Horse



ARMAN Yoyo Marmalade



SAM FRANCIS When White



PETER HALLEY Blue Prison



FERNANDO BOTERO Dancers



TOM WESSELMANN Blue



MARC QUINN American Sea Ice



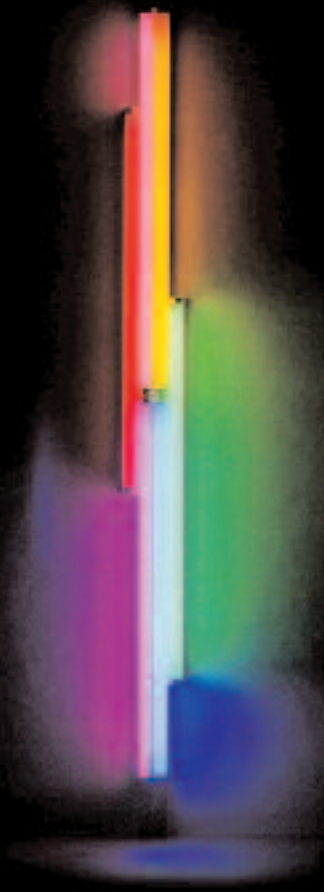
TOM WESSELMANN Kiki



DAVID SALLE Blue Flowers



ROY LICHTENSTEIN Modern Head Relief



DAN FLAVIN Untitled (for Charlotte)

- 26 **ARMAN** Yoyo Marmalade
accumulation of yoyos in resin in plexiglass, 1981
17 $\frac{3}{4}$ x 10 x 2 $\frac{1}{2}$ in. (44.9 x 25.4 x 6.3 cm)
- 10 **PIERRE BONNARD** La Roulotte à Vernonnet
watercolour and pencil on paper on canvas, c. 1930
13 $\frac{3}{4}$ x 17 in. (34.8 x 42.8 cm)
- 29 **FERNANDO BOTERO** Dancers
bronze with black patina, 2006
43 $\frac{1}{4}$ x 26 x 22 $\frac{7}{8}$ in. (110 x 66 x 58 cm), edition 6 + 2
- 12 **HEINRICH CAMPENDONK**
Cat in Mountain Landscape
oil on canvas, 1914, 21 $\frac{1}{2}$ x 26 $\frac{5}{8}$ in. (54.4 x 67.5 cm)
- 24 **OSCAR DOMINGUEZ** Tête de taureau à la fleche
oil on canvas, c. 1949, 12 $\frac{7}{8}$ x 21 $\frac{1}{2}$ in. (32.8 x 54.7 cm)
- 7 **JEAN DUFY** L'écuyère au cirque Medrano
oil on canvas, 1929, 19 $\frac{5}{8}$ x 25 $\frac{3}{5}$ in. (50 x 65 cm)
- 8 **MAX ERNST** Les patineurs
oil on wood, 1959, 16 $\frac{1}{8}$ x 13 $\frac{1}{8}$ in. (41 x 33.3 cm)
- 35 **DAN FLAVIN** Untitled (for Charlotte)
6 coloured fluorescent lights in fixture, 1987
97 $\frac{1}{2}$ x 7 $\frac{3}{4}$ x 3 $\frac{3}{4}$ in. (246.5 x 19.5 x 9.5 cm)
edition 5 (only 4 made)
- 27 **SAM FRANCIS** When White (SFP 63-19)
oil on canvas, 1963-1964, 98 x 76 $\frac{1}{8}$ in. (249 x 193.4 cm)
- 4 **GEORGE GROSZ** An Evening in Berlin
watercolour and Indian ink on laid paper, 1929
19 $\frac{1}{8}$ x 24 $\frac{1}{2}$ in. (48.6 x 62.4 cm)
- 5 **Lady Hamilton**
watercolour and brown ink on sturdy laid paper, 1925
23 $\frac{3}{8}$ x 17 $\frac{3}{4}$ in. (59.5 x 45 cm)

- 28 **PETER HALLEY** *Blue Prison*
mixed media on canvas, 2007, 30 x 30 in. (76.2 x 76.2 cm)
- 9 **ALEXEJ VON JAWLENSKY** *Abstract Head – Sunrise*
oil on cardboard, 1931, 16 $\frac{7}{8}$ x 12 $\frac{7}{8}$ in. (42.8 x 32.8 cm)
- 2 **WASSILY KANDINSKY** *Coloured Lines*
watercolour and Indian ink on paper on cardboard, 1924
11 $\frac{7}{8}$ x 18 in. (30.2 x 45.7 cm)
- 3 *Little Point*
gouache on black paper, 1939, 15 x 19 in. (38 x 48.3 cm)
- 1 *Walking Couple*
gouache on black cardboard, 1905
13 x 18 $\frac{7}{8}$ in. (33.1 x 48 cm)
- 23 **ANSELM KIEFER** *Merkaba*
mixed media on canvas, 2002, 74 x 110 in. (188 x 279.4 cm)
- 25 **WIFREDO LAM** *Red Horse*
gouache on paper, 1957, 19 $\frac{5}{8}$ x 24 $\frac{3}{8}$ in. (50 x 62 cm)
- 34 **ROY LICHTENSTEIN** *Modern Head Relief*
3D brass relief, 1970, edition 100
24 x 17 $\frac{3}{4}$ in. (61 x 45.1 cm)
- 13 **FRANZ MARC** *Green Horse*
tempera on paper, 1912, 8 $\frac{7}{8}$ x 13 $\frac{7}{8}$ in. (22.5 x 35.4 cm)
- 21 **JOAN MIRÓ** *Femme, oiseau, étoile*
gouache and coloured chalk on sturdy laid paper, 1943
26 $\frac{1}{8}$ x 18 $\frac{1}{8}$ in. (66.4 x 46.2 cm)
- 18 *Hommage d'amitié*
mixed media on paper, 1947, 12 $\frac{1}{2}$ x 9 $\frac{3}{8}$ in. (23.8 x 31.8 cm)
- 19 *Painting (Woman in Front of the Sun)*
oil, rope and wire on canvas, 1949
8 $\frac{5}{8}$ x 6 $\frac{1}{4}$ x 1 in. (22 x 16 x 2.5 cm)
- 20 *Nocturne*
gouache, Indian ink and pastel on paper, 1942
19 x 25 $\frac{1}{8}$ in. (48.2 x 63.8 cm)

- 22 **LOUISE NEVELSON** Southern Shores XXIII
wood, painted white, 1968
42 1/8 x 38 1/4 in. (107 x 97 cm)
- 15 **EMIL NOLDE** Clematis and Dahlias
oil on canvas, 1935, 26 1/2 x 34 3/4 in. (67.3 x 88.2 cm)
- 11 **Palmtrees on the Beach**
oil on canvas, c. 1915, 29 x 34 4/5 in. (73.5 x 88.5 cm)
- 14 **Sea with Black Steamship**
watercolour and opaque white on Japan paper, 1946
9 x 10 1/2 in. (22.8 x 26.9 cm)
- 16 **PABLO PICASSO** Nu couché
pencil on wove paper, 1969
19 3/4 x 25 5/8 in. (50.2 x 65 cm)
- 31 **MARC QUINN** American Sea Ice
oil on canvas, 2008, 66 x 99 in. (167.6 x 251.5 cm)
- 33 **DAVID SALLE** Blue Flowers
oil on canvas, 2005, 56 x 90 in. (142.4 x 228 cm)
- 17 **HENRI DE TOULOUSE-LAUTREC**
Partie de Campagne ou La Charette Anglaise
colour lithograph on paper, 1897
16 1/8 x 20 5/8 in. (40.7 x 52.1 cm), edition 100
- 6 **MARIANNE VON WEREFKIN** Dancing Couple
gouache on artist board, 1907-1908
14 5/8 x 10 7/8 in. (37 x 27.5 cm)
- 30 **TOM WESSELMANN** Blue
steelcut, oil on cut-out aluminium, 1996
71 x 76 x 6 in. (180.3 x 193 x 15.3 cm)
- 32 **Kiki (CD 91)**
oil on canvas, 2003, 66 x 88 in. (167.5 x 223.5 cm)
- cover **Study for Bouquet with Blue Shadow (99-1)**
oil on canvas, 1999
26 1/2 x 25 1/2 in. (67.3 x 64.8 cm)

Max Beckmann
Ernst Barlach
Lovis Corinth
Otto Dix
George Grosz
Oskar Kokoschka
Georg Kolbe
Max Liebermann
Edvard Munch
Egon Schiele
Kurt Schwitters

**GERMAN
EXPRESSIONISM**

BRÜCKE
Erich Heckel
Ernst-Ludwig Kirchner
Otto Mueller
Emil Nolde
Max Pechstein
Karl Schmidt-Rottluff

BLAUER REITER
H. Campendonk
Alexej Jawlensky
Wassily Kandinsky
Paul Klee
August Macke
Franz Marc
Gabriele Münter

BAUHAUS
Lyonel Feininger
Wassily Kandinsky
Paul Klee
Oskar Schlemmer

**CLASSICAL
MODERNISM**

Jean Arp
Alexander Calder
Lynn Chadwick
Marc Chagall
Eduardo Chillida
Max Ernst
Fernand Léger
Alberto Giacometti
Marino Marini
Henri Matisse
Joan Miró
Henry Moore
Louise Nevelson
Pablo Picasso
George Rickey

POST WAR
Jean Dubuffet
Lucio Fontana
Sam Francis
Yves Klein
Piero Manzoni
Serge Poliakoff
Antoni Tàpies
Günther Uecker

CONTEMPORARY

Georg Baselitz
Fernando Botero
Knopp Ferro
Anselm Kiefer
Markus Lüpertz
Sigmar Polke
Gerhard Richter
William Turnbull

POP ART
Jim Dine
Robert Indiana
Roy Lichtenstein
Claes Oldenburg
Robert Rauschenberg
James Rosenquist
Frank Stella
Tom Wesselmann
Andy Warhol

GALERIE THOMAS

AMERICAN INTERNATIONAL FINE ART FAIR

PALM BEACH 2009

February 4 - 8, 2009

**Palm Beach County Convention Center
650 Okeechobee Boulevard
West Palm Beach, Florida**

**Booth 603
phone USA-646-852 81 51**

**Opening hours: Daily from 12 to 7 pm
Sunday, February 8, from 12 to 6 pm**

Maximilianstrasse 25 · 80539 Munich/Germany
Phone +49-89-29 000 80 · Fax +49-89-29 000 888
info@galerie-thomas.de · www.galerie-thomas.de

GALERIE THOMAS