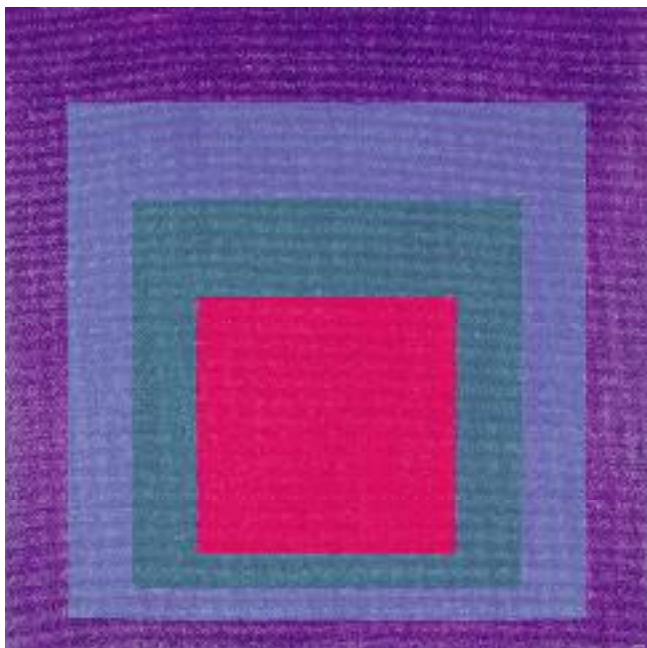


THE ARMORY SHOW 2010
NEW YORK PIER 92



GALERIE THOMAS

We have opened a new location!

515 square meters for Modern Art!
We are looking forward to seeing you at:

GALERIE THOMAS MODERN

Modern & Contemporary



Tuerkenstrasse 16 · 80333 Munich/Germany
Phone +49-89-29 000 860 · Telefax +49-89-29 000 866
Mail: modern@galerie-thomas.de · Internet: www.galerie-thomas.de



TIM EITEL Night

cover: JOSEF ALBERS Homage to the Square: Spring Tide



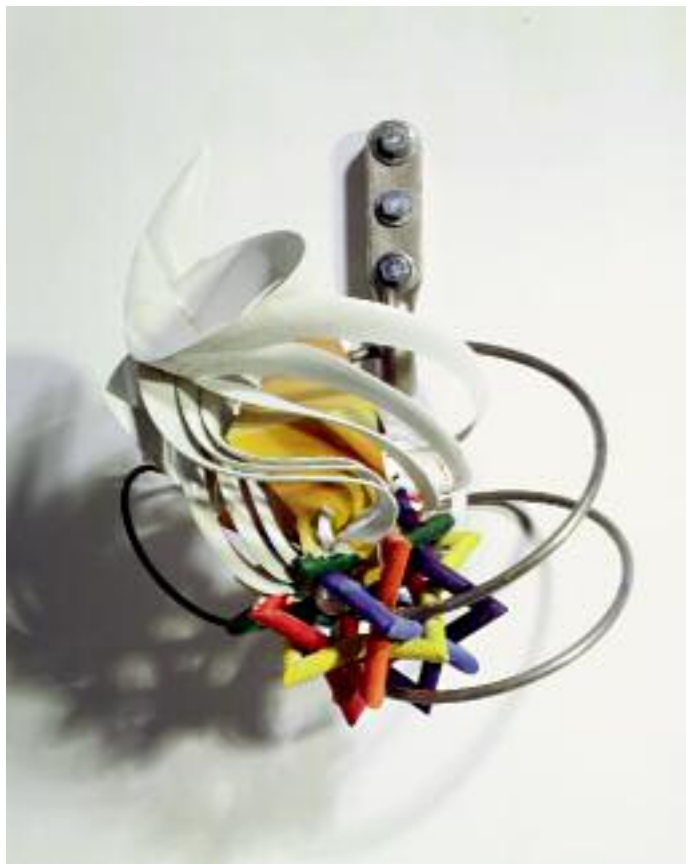
ROY LICHTENSTEIN Modern Head Relief



ROY LICHTENSTEIN Nude with Blue Hair, State 1



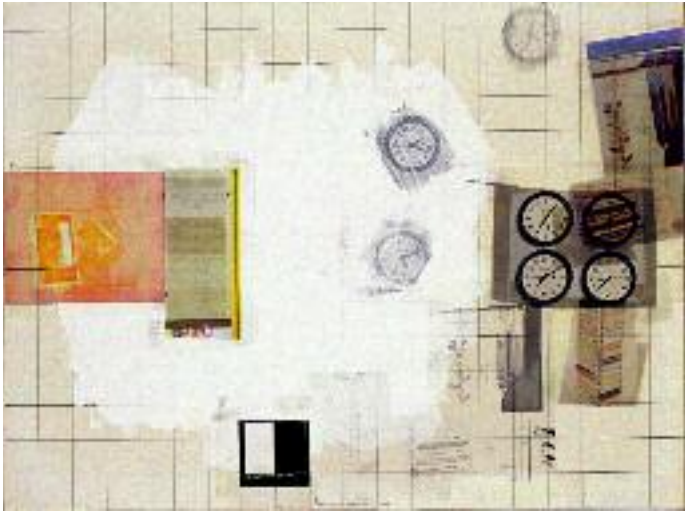
JOAN MITCHELL Flower III, from the Bedford Series



FRANK STELLA K 3



GEORGE SEGAL Fragment – Venus Gesture



ROBERT RAUSCHENBERG Paragraph III



TOM WESSELMANN Reclining Stocking Nude



DAVID SALLE Blue Flowers



MARK DI SUVERO

Coeur de chouette



ANDY WARHOL Guns



ROBERT INDIANA Hope



SAM FRANCIS When White



JIM DINE Smaller Parrot at Home



MARC QUINN Emperor Penguins Hunting Ground



LOUISE NEVELSON

Maquette for Monumental Sculpture III



JESÚS RAFAEL SOTO Cruz cobalto y limón



ANSELM KIEFER Remains of the Sun



ANSELM KIEFER Freemasons



FERNANDO BOTERO Rooster



MARC CHAGALL Le coq fleuri



FERNANDO BOTERO Street Scene



FERNANDO BOTERO Circus Act



EMIL NOLDE Turbulent Sea with Steamboat



ALEXEJ VON JAWLENSKY House with Palm Tree



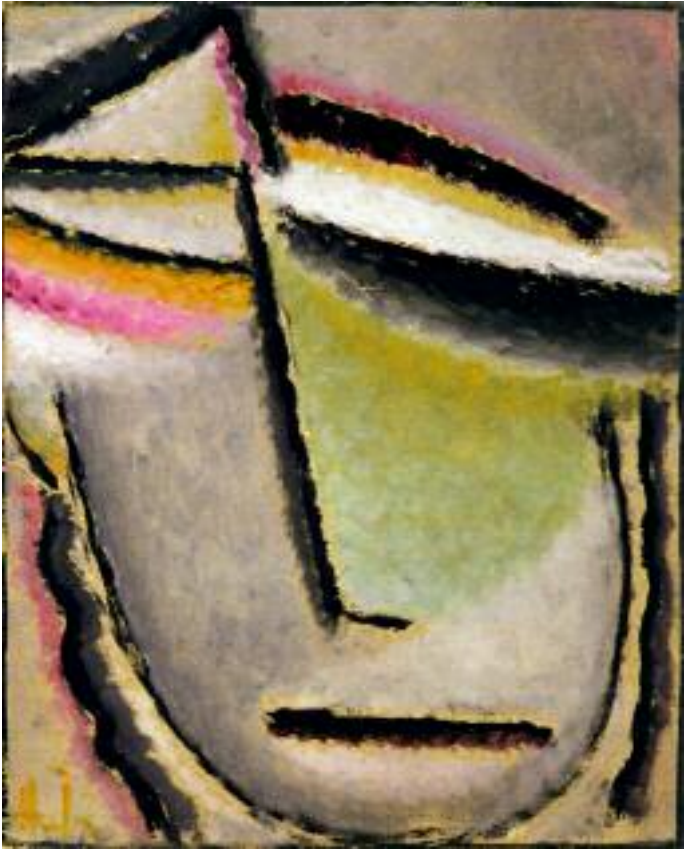
ALEXANDER ARCHIPENKO Torso



CHAIM SOUTINE Two Pheasants on a Table



GEORG KOLBE Crouching Girl



ALEXEJ VON JAWLENSKY Abstract Head

- cover **JOSEF ALBERS** Homage to the Square: Spring Tide
oil on masonite, 1956, 40 x 40 in. (101.6 x 101.6 cm)
- 26 **ALEXANDER ARCHIPENKO** Torso
bronze, 1948/2008
23 $\frac{3}{8}$ x 3 $\frac{7}{8}$ in. (59.5 x 10 cm), edition 12 posthumous casts
- 23 **FERNANDO BOTERO** Circus Act
oil on canvas, 2008, 50 x 39 in. (127 x 99 cm)
- 20 **Rooster** bronze, 1981
26 $\frac{1}{2}$ x 29 $\frac{1}{2}$ x 23 in. (67.3 x 74.9 x 58.4 cm), edition 6 + 2
- 22 **Street Scene**
graphite, pen and crayon on paper, 12 x 9 in. (30.5 x 22.9 cm)
- 21 **MARC CHAGALL** Le coq fleuri
gouache, watercolour, wax crayon on paper on canvas, 1955
39 $\frac{3}{4}$ x 59 $\frac{7}{8}$ in. (99.7 x 152.7 cm)
- 14 **JIM DINE** Smaller Parrot at Home
bronze, painted with oil and enamel, 2008
35 $\frac{1}{2}$ x 15 x 13 in. (91.2 x 38.1 x 33 cm), edition 8
- 1 **TIM EITEL** Night
oil on canvas, 2003, 62 $\frac{1}{4}$ x 78 $\frac{3}{4}$ in. (158 x 200 cm)
- 13 **SAM FRANCIS** When White (SFP 63-19)
oil on canvas, 1963 – 1964, 98 x 76 $\frac{1}{8}$ in. (249 x 193.4 cm)
- 12 **ROBERT INDIANA** Hope
brushed stainless steel, 2009, 18 x 18 x 9 in. (46 x 46 x 23 cm)
edition 9 + 1
- 29 **ALEXEJ VON JAWLENSKY** Abstract Head
oil on linenstructured artist board, 1927, 10 $\frac{3}{8}$ x 8 $\frac{1}{4}$ in. (26.3 x 21 cm)
- 25 **House with Palm Tree**
oil on cardboard on masonite, 1914, 19 $\frac{3}{4}$ x 21 $\frac{1}{4}$ in. (50 x 54 cm)
- 18 **ANSELM KIEFER** Remains of the Sun
mixed media on photograph on board, 1998
42 $\frac{3}{8}$ x 64 $\frac{3}{4}$ in. (107.5 x 164.5 cm)
- 19 **Freemasons**
gouache and chalk over photocollage in object box, 2004 - 2008
48 x 49 $\frac{5}{8}$ in. (122 x 126 cm)
- 28 **GEORG KOLBE** Crouching Girl
bronze, dark brown patina, 1917/cast at a later date
height 9 $\frac{3}{8}$ in. (23.5 cm)

- 2 **ROY LICHTENSTEIN** *Modern Head Relief*
brass relief, 1970, 24 x 17 ³/₄ in. (61 x 45.1 cm), edition 100+5
- 3 *Nude with Blue Hair, State 1*
relief print in colour, 1994, 51 ⁷/₈ x 31 ⁵/₈ in. (132 x 80.5 cm)
edition 10 + 6
- 4 **JOAN MITCHELL** *Flower III, from the Bedford Series*
colour lithograph on white Arches, 1981
42 ¹/₂ x 32 ¹/₂ in. (107.9 x 82.5 cm)
- 16 **LOUISE NEVELSON** *Maquette for Monumental Sculpture III*
welded steel, 1977, 25 x 16 ¹/₂ x 7 in. (63.5 x 42 x 17.8 cm)
- 24 **EMIL NOLDE** *Turbulent Sea with Steamboat*
watercolour on Japan paper, 1946/1948
9 x 10 ⁷/₈ in. (23 x 27.5 cm)
- 15 **MARC QUINN** *Emperor Penguins Hunting Ground*
oil on canvas, 2009, 102 ⁷/₈ x 66 ¹/₂ in. (261 x 169 cm)
- 7 **ROBERT RAUSCHENBERG** *Paragraph III*
pencil, gouache and collage on artist board, 1966
15 ¹/₄ x 20 ³/₈ in. (38.9 x 50.9 cm)
- 9 **DAVID SALLE** *Blue Flowers*
oil on canvas, 2005, 56 x 90 in. (142.4 x 228 cm)
- 6 **GEORGE SEGAL** *Fragment – Venus Gesture*
bronze with white patina, 1986
24 x 12 ¹/₄ x 7 in. (70 x 31.1 x 17.7 cm), edition 9 + 3
- 17 **JESÚS RAFAEL SOTO** *Cruz cobalto y limón*
metal wires, paint and wood, 1975
60 ⁵/₈ x 60 ⁵/₈ in. (154 x 154 cm)
- 27 **CHAIM SOUTINE** *Two Pheasants on a Table*
oil on canvas, c. 1926, 19 ³/₄ x 25 ¹/₂ in. (50.3 x 64.8 cm)
- 5 **FRANK STELLA** *K 3*
stainless steel tubing, nylon RPT, 2006
11 x 9 x 11 in. (27.9 x 22.9 x 27.9 cm)
- 10 **MARK DI SUVERO** *Coeur de chouette*
steel/2 pieces, 1993, 23 ⁵/₈ x 19 ³/₄ x 15 ³/₄ in. (60 x 50 x 40 cm)
- 8 **TOM WESSELMANN** *Reclining Stocking Nude*
oil on canvas on board, 1982, 29 ¹/₂ x 51 ¹/₄ in. (75 x 130.2 cm)
- 11 **ANDY WARHOL** *Guns*
synthetic polymer paint and silkscreen ink on canvas, 1981 – 82
16 x 19 ⁷/₈ in. (40.5 x 50.5 cm)

THOMAS GOES MODERN ...

POP ART

Jim Dine
Robert Indiana
Roy Lichtenstein
Claes Oldenburg
Robert Rauschenberg
James Rosenquist
Frank Stella
Tom Wesselmann
Andy Warhol

US POST WAR

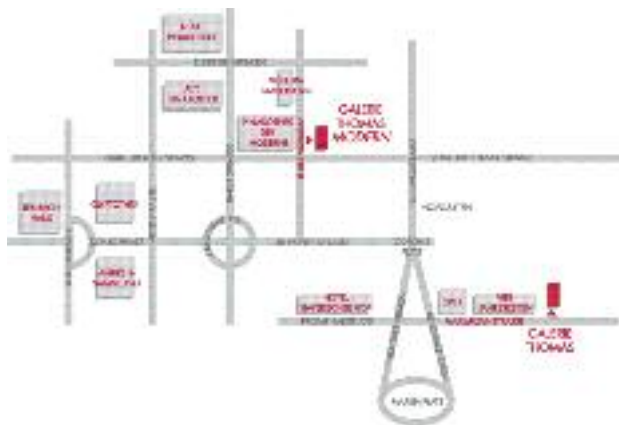
Sam Francis
Adolph Gottlieb
Hans Hofmann
Willem de Kooning
George Rickey
George Segal

INTERNATIONAL

Joseph Beuys
Georg Baselitz
John Chamberlain
Gottard Graubner
Anselm Kiefer
Sigmar Polke
Gerhard Richter
Cy Twombly

CONTEMPORARY

Wim Delvoye
Peter Halley



GALERIE THOMAS MODERN

Modern & Contemporary

... AND STAYS CLASSIC

GERMAN EXPRESSIONISM

BRÜCKE

Erich Heckel
Ernst-Ludwig Kirchner
Otto Mueller
Emil Nolde
Max Pechstein
Karl Schmidt-Rottluff

BLAUER REITER

H. Campendonk
Alexej Jawlensky
Wassily Kandinsky
Paul Klee
August Macke
Franz Marc
Gabriele Münter

BAUHAUS

Lyonel Feininger
Wassily Kandinsky
Paul Klee
Oskar Schlemmer

CLASSICAL MODERNISM

Max Beckmann
Lovis Corinth
Otto Dix
George Grosz
Oskar Kokoschka
Max Liebermann
Egon Schiele
Kurt Schwitters

Jean Arp
Alexander Calder
Marc Chagall
Robert Delaunay

Max Ernst
Fernand Léger
René Magritte
Henri Matisse
Joan Miró
Edvard Munch
Pablo Picasso
Chaim Soutine

MODERN

Fernando Botero
Jean Dubuffet
Knopp Ferro
Alberto Giacometti
Ernst Wilhelm Nay
Louise Nevelson
Serge Poliakoff
Arnaldo Pomodoro
Antoni Tàpies
Victor Vasarely
Fritz Winter

ZERO

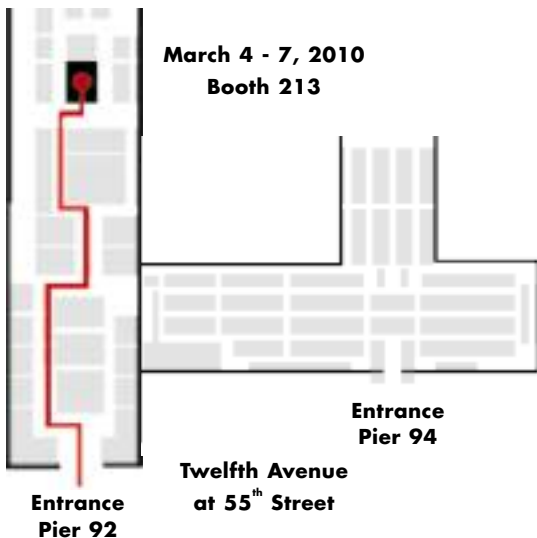
Arman
Lucio Fontana
Yves Klein
Piero Manzoni
Jesús Rafael Soto
Günther Uecker

GALERIE THOMAS

Expressionism & Classic Modern

THE ARMORY SHOW 2010

NEW YORK PIER 92



Phone USA-212-767-0914
Fax USA-212-767-1086

Maximilianstrasse 25 · 80539 Munich/Germany
Phone +49-89-29 000 80 · Fax +49-89-29 000 888
info@galerie-thomas.de · www.galerie-thomas.de

GALERIE THOMAS