

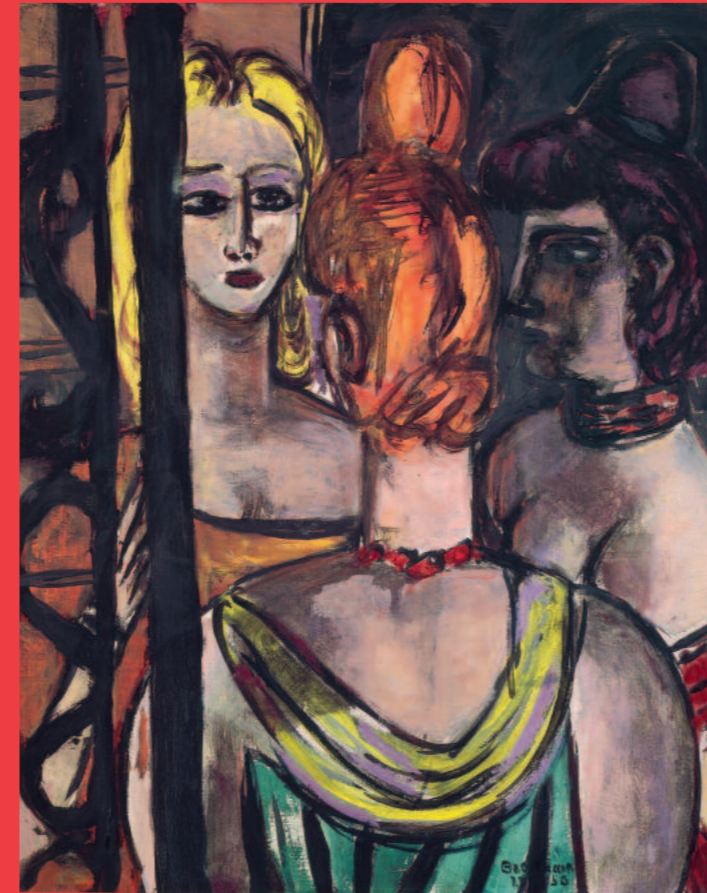
MASTERPIECES IV

Maastricht TEFAF March 7-16, 2008
Munich April 3 - May 17, 2008
New York June 2008
Moscow Fall 2008



MASTERPIECES IV

Galerie Thomas proudly presents a fine selection of Masterpieces of German Expressionism with paintings of 20th century as masters from the *Brücke* and *The Blue Rider*. The exhibition will be shown in four international locations and will be accompanied by a detailed catalogue of the series *Masterpieces*.



Maximilianstrasse 25 · 80539 Munich/Germany
Telefon +49-89-29 000 80 · Telefax +49-89-29 000 888
info@galerie-thomas.de · www.galerie-thomas.de



BECKMANN, CAMPENDONK, DELAUNAY, JAWLENSKY, KIRCHNER, MACKE, MARC, MUELLER, NOLDE

MASTERPIECES IV

WORKS OF GERMAN EXPRESSIONISM



GALERIE THOMAS

GALERIE THOMAS



We welcome you at TEFAF Maastricht 2008. Come to see our Masterpieces IV at Booth 437.

cover: Alexej von Jawlensky "Spanish Lady" inside: Ernst Ludwig Kirchner "Portrait Nele van de Velde" back side: Max Beckmann "Three Women (Heads)" TEFAF Maastricht 2008, [Booth 437](#), [March 7-16](#), Phone +31-43-383 87 85 Fax +31-43-383 86 40.



We welcome you at TEFAF Maastricht 2008. Come to see our Masterpieces IV at Booth 437.

cover: Alexej von Jawlensky "Spanish Lady" inside: Ernst Ludwig Kirchner "Portrait Nele van de Velde" back side: Max Beckmann "Three Women (Heads)" TEFAF Maastricht 2008, [Booth 437](#), [March 7-16](#), Phone +31-43-383 87 85 Fax +31-43-383 86 40.