

**ART BASEL  
MIAMI BEACH 2008**



**GALERIE THOMAS**

Prices upon request. We refer to our sales and delivery conditions.  
Measurements: height by width by depth.

For detailed information on the works please see page 45-48.

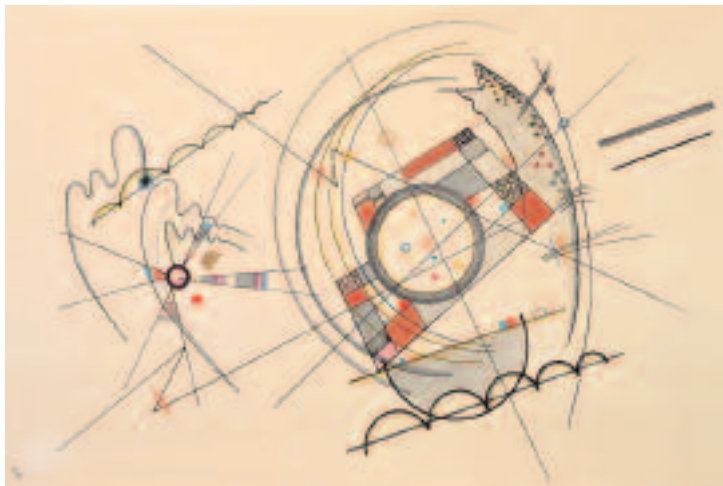
© Galerie Thomas 2008

cover:

MARK ROTHKO      Untitled



WASSILY KANDINSKY    Walking Couple



WASSILY KANDINSKY

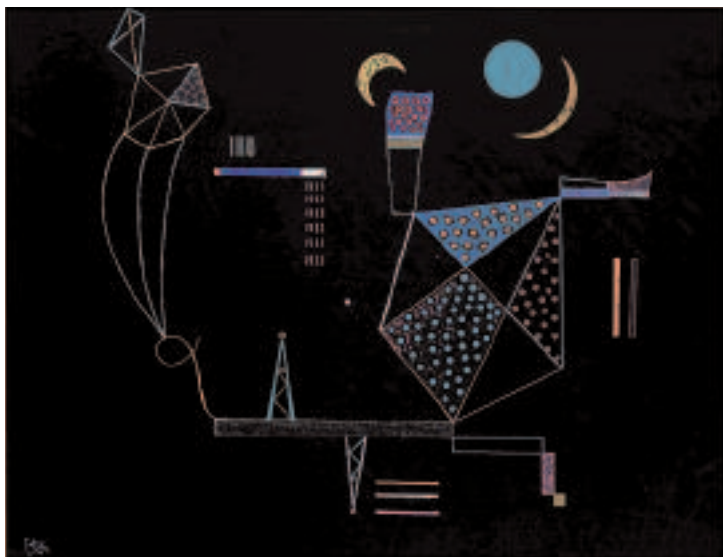
Coloured Lines



WASSILY KANDINSKY    Brown Ray



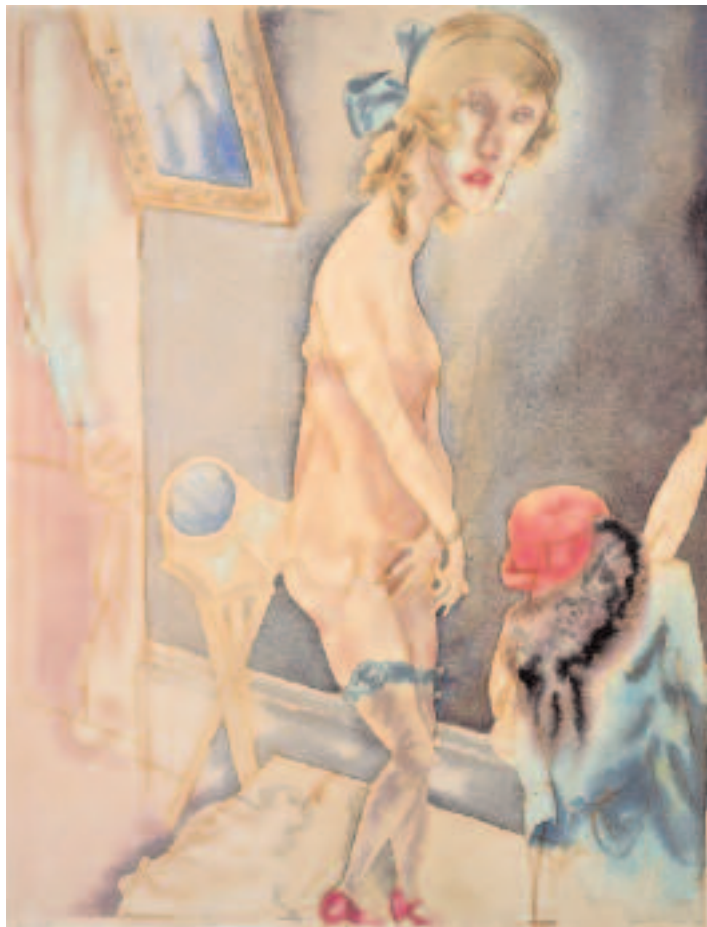
WASSILY KANDINSKY In Height



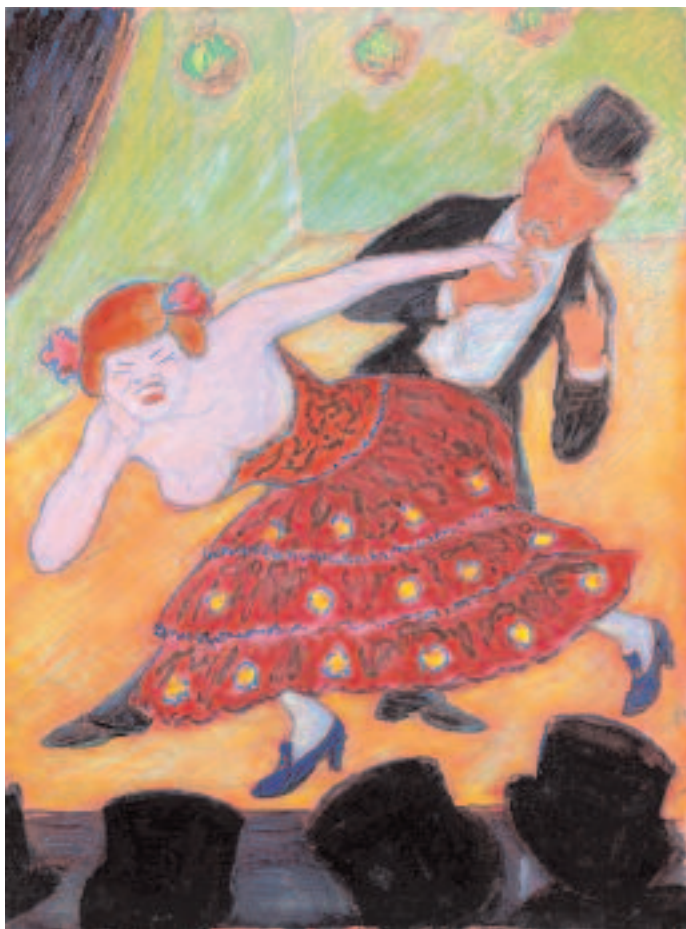
WASSILY KANDINSKY Little Point



GEORGE GROSZ    An Evening in Berlin



GEORGE GROSZ    Lady Hamilton



MARIANNE VON WEREFKIN

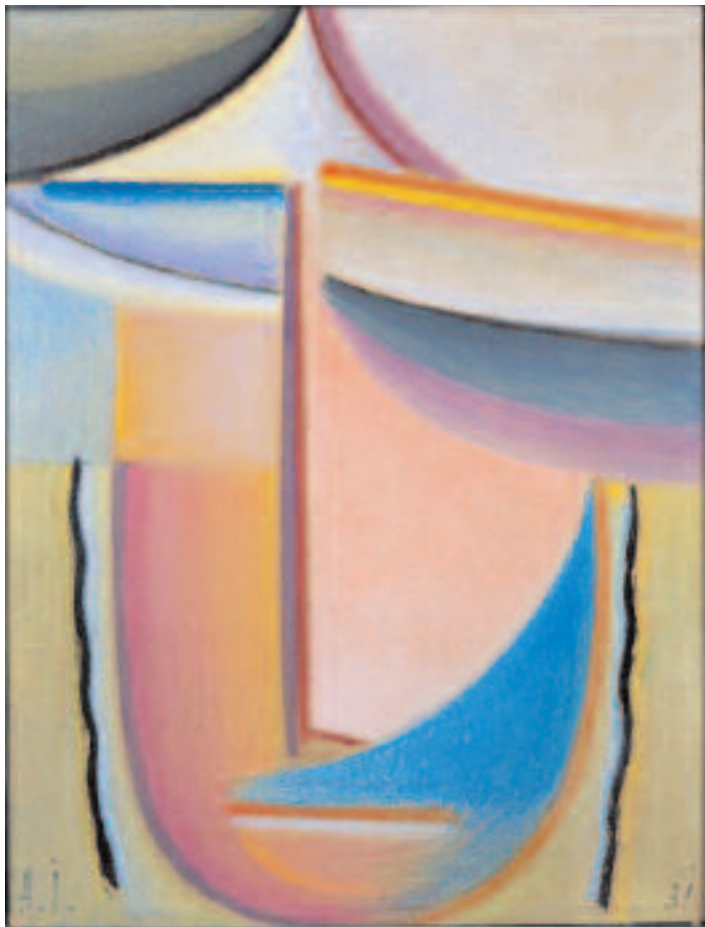
Dancing Couple



ERICH HECKEL    Bathers



MAX ERNST Les patineurs



ALEXEJ VON JAWLENSKY

Abstract Head – Sunrise



EMIL NOLDE     Brother and Sister



EMIL NOLDE Palmtrees on the Beach



HEINRICH CAMPENDONK

Cat in Mountain Landscape



FRANZ MARC    Green Horse



EMIL NOLDE    Seascape



GABRIELE MÜNTER      *Snow in March*



PABLO PICASSO    Nu couché



PABLO PICASSO    L'Aubade



JOAN MIRÓ    Hommage d'amitié



JOAN MIRÓ      Painting (Woman in Front of the Sun)



JOAN MIRÓ    Nocturne

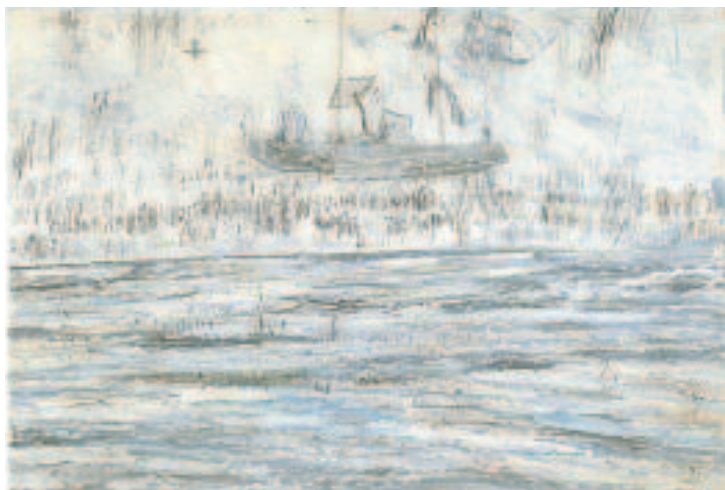


JOAN MIRÓ    Femme, oiseau, étoile

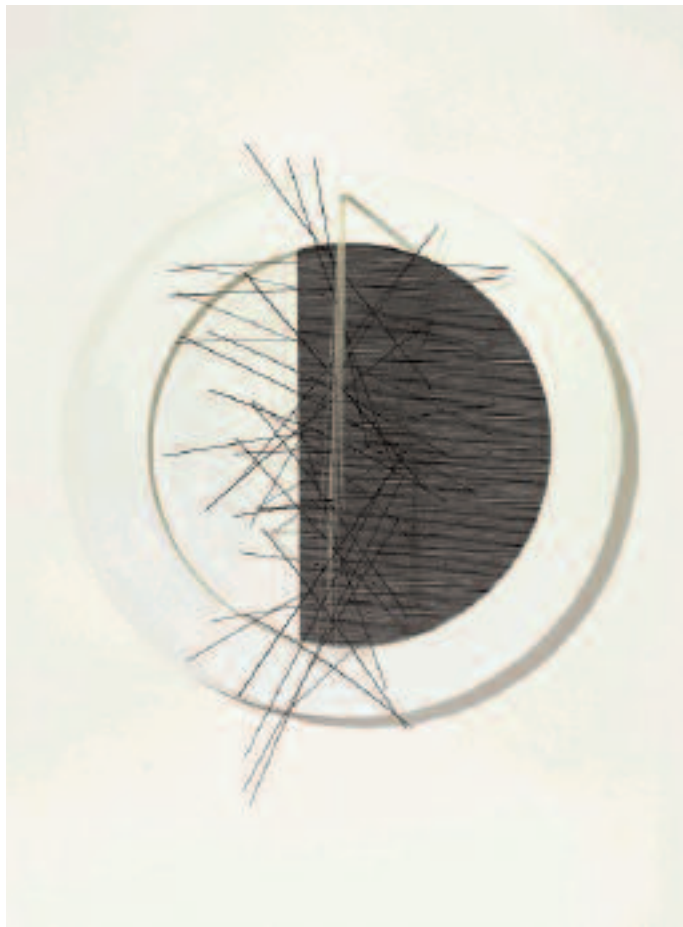


LOUISE NEVELSON

Southern Shores XXIII



ANSELM KIEFER    *Merkaba*



JESÚS RAFAEL SOTO    Cercles superposés



FERNANDO BOTERO      Man on a Horse with Bowler Hat



OSCAR DOMINGUEZ      Tête de taureau à la fleche



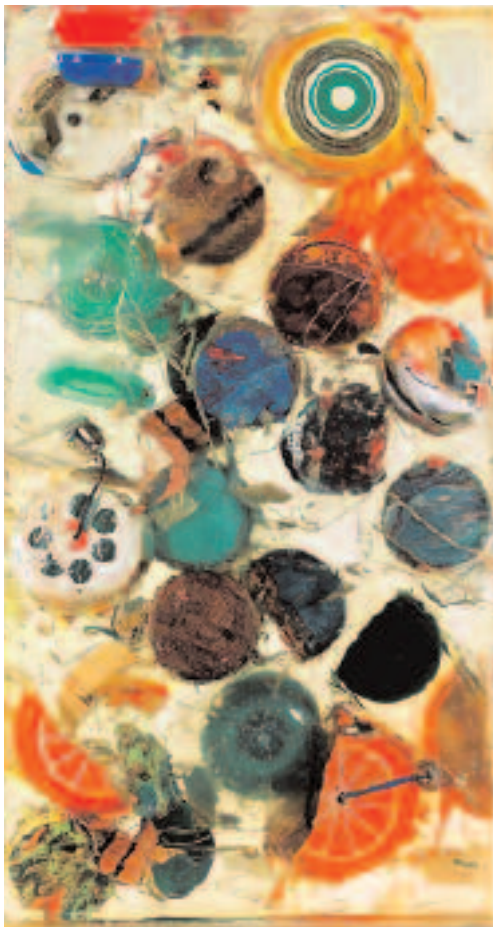
WIFREDO LAM     Red Horse



FERNANDO BOTERO    Horse



FERNANDO BOTERO      Standing Woman with Umbrella



ARMAN Yoyo Marmalade



TAKASHI MURAKAMI

Eye Love Monogram



PETER HALLEY    Blue Prison



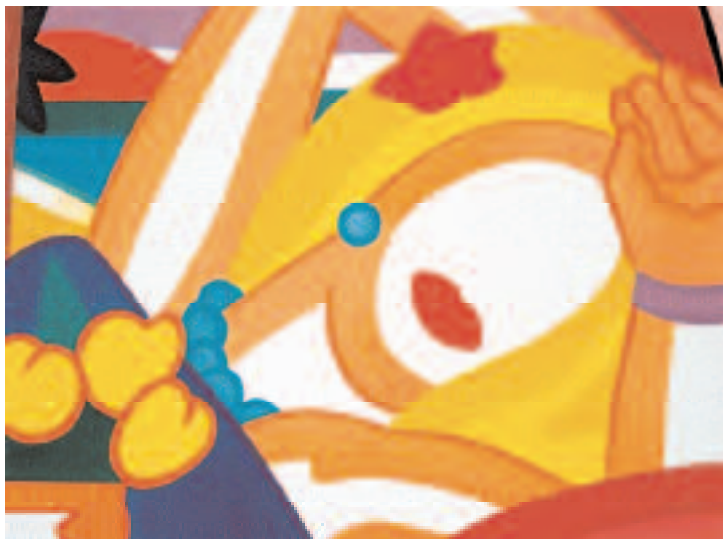
SONIA DELAUNAY-TERK Rythme coloré



TOM WESSELMANN    Blue



MARC QUINN     American Sea Ice



TOM WESSELMANN    Kiki



DAVID SALLE    Blue Flowers



ROY LICHTENSTEIN    Modern Head Relief



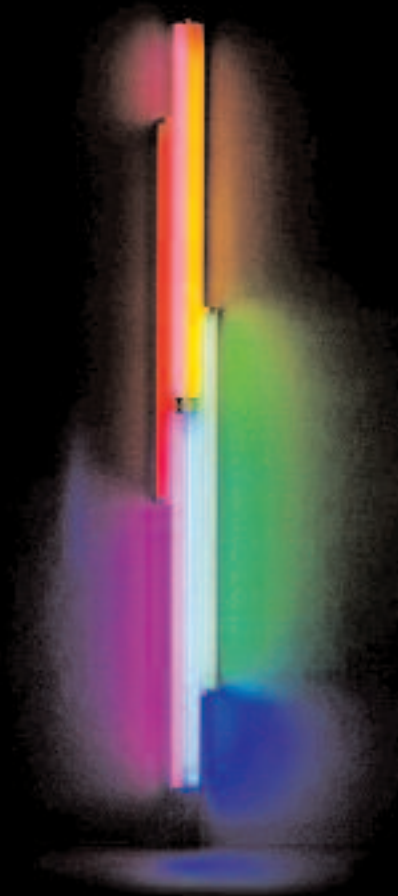
RENÉ MAGRITTE    L'Ovation



SAM FRANCIS    When White



WILLEM DE KOONING      East Hampton XXVII



DAN FLAVIN

Untitled (for Charlotte)

- 32 **ARMAN** Yoyo Marmalade  
accumulation of yoyos in resin in plexiglass, 1981  
17  $\frac{3}{4}$  x 10 x 2  $\frac{1}{2}$  in. (44.9 x 25.4 x 6.3 cm)
- FERNANDO BOTERO**
- 30 Horse  
bronze with brown patina, 2006, edition 6 + 2  
36  $\frac{1}{4}$  x 39  $\frac{3}{4}$  x 24  $\frac{3}{8}$  in. (92 x 101 x 62 cm)
- 27 Man on a Horse with Bowler Hat  
bronze with brown patina, 2004, edition 6 + 2  
50 x 24  $\frac{3}{8}$  x 34  $\frac{1}{4}$  in. (127 x 62 x 87 cm)
- 31 Standing Woman with Umbrella  
bronze with brown patina, 2006, edition 6 + 2  
20  $\frac{3}{4}$  x 11 x 7  $\frac{7}{8}$  in. (63 x 28 x 20 cm)
- 14 **HEINRICH CAMPENDONK**  
Cat in Mountain Landscape  
oil on canvas, 1914, 21  $\frac{1}{2}$  x 26  $\frac{5}{8}$  in. (54.4 x 67.5 cm)
- 35 **SONIA DELAUNAY-TERK** Rythme coloré  
gouache on paper, 1942-1948, 9 x 7  $\frac{3}{4}$  in. (24.2 x 20 cm)
- 28 **OSCAR DOMINGUEZ** Tête de taureau à la fleche  
oil on canvas, c. 1949, 12  $\frac{7}{8}$  x 21  $\frac{1}{2}$  in. (32.8 x 54.7 cm)
- 10 **MAX ERNST** Les patineurs  
oil on wood, 1959, 16  $\frac{1}{8}$  x 13  $\frac{1}{8}$  in. (41 x 33.3 cm)
- 44 **DAN FLAVIN** Untitled (for Charlotte)  
6 coloured fluorescent lights in fixture, 1987  
97  $\frac{1}{2}$  x 7  $\frac{3}{4}$  x 3  $\frac{3}{4}$  in. (246.5 x 19.5 x 9.5 cm)  
edition 5 (only 4 made)
- 42 **SAM FRANCIS** When White (SFP 63-19)  
oil on canvas, 1963-1964, 98 x 76  $\frac{1}{8}$  in. (249 x 193.4 cm)
- 6 **GEORGE GROSZ** An Evening in Berlin  
watercolour and Indian ink on laid paper, 1929  
19  $\frac{1}{8}$  x 24  $\frac{1}{2}$  in. (48.6 x 62.4 cm)

- 7 **GEORGE GROSZ** Lady Hamilton  
watercolour and brown ink on sturdy laid paper, 1925  
23  $\frac{3}{8}$  x 17  $\frac{3}{4}$  in. (59.5 x 45 cm)
- 34 **PETER HALLEY** Blue Prison  
mixed media on canvas, 2007, 30 x 30 in. (76.2 x 76.2 cm)
- 9 **ERICH HECKEL** Bathers  
gouache, watercolour and pencil on paper, 1909  
10  $\frac{5}{8}$  x 13  $\frac{3}{8}$  in. (27 x 34 cm)
- 11 **ALEXEJ VON JAWLENSKY** Abstract Head – Sunrise  
oil on cardboard, 1931, 16  $\frac{7}{8}$  x 12  $\frac{7}{8}$  in. (42.8 x 32.8 cm)
- 3 **WASSILY KANDINSKY** Brown Ray  
watercolour and Indian ink on paper on cardboard, 1924  
15  $\frac{7}{8}$  x 11  $\frac{7}{8}$  in. (40.4 x 30.3 cm)
- 2 **Coloured Lines**  
watercolour and Indian ink on paper on cardboard, 1924  
11  $\frac{7}{8}$  x 18 in. (30.2 x 45.7 cm)
- 4 **In Height**  
gouache on black paper on cardboard, 1939  
19  $\frac{1}{2}$  x 19 in. (49.5 x 25 cm)
- 5 **Little Point**  
gouache on black paper, 1939  
15 x 19 in. (38 x 48.3 cm)
- 1 **Walking Couple**  
gouache on black cardboard, 1905  
13 x 18  $\frac{7}{8}$  in. (33.1 x 48 cm)
- 25 **ANSELM KIEFER** Merkaba  
mixed media on canvas, 2002, 74 x 110 in. (188 x 279.4 cm)
- 43 **WILLEM DE KOONING** East Hampton XXVII  
oil on paper laid down on canvas, 1968  
23  $\frac{1}{4}$  x 18  $\frac{1}{2}$  in. (59 x 47 cm)

page

- 29 **WIFREDO LAM** Red Horse  
gouache on paper, 1957, 19 <sup>5</sup>/<sub>8</sub> x 24 <sup>3</sup>/<sub>8</sub> in. (50 x 62 cm)
- 40 **ROY LICHTENSTEIN** Modern Head Relief  
3D brass relief, 1970, edition 100  
24 x 17 <sup>3</sup>/<sub>4</sub> in. (61 x 45.1 cm)
- 41 **RENÉ MAGRITTE** L'Ovation  
gouache on paper, c. 1962, 11 <sup>5</sup>/<sub>8</sub> x 16 <sup>1</sup>/<sub>2</sub> in. (29.5 x 42 cm)
- 15 **FRANZ MARC** Green Horse  
tempera on paper, 1912, 8 <sup>7</sup>/<sub>8</sub> x 13 <sup>7</sup>/<sub>8</sub> in. (22.5 x 35.4 cm)
- 23 **JOAN MIRÓ** Femme, oiseau, étoile  
gouache and coloured chalk on sturdy laid paper, 1943  
26 <sup>1</sup>/<sub>8</sub> x 18 <sup>1</sup>/<sub>8</sub> in. (66.4 x 46.2 cm)
- 20 **Hommage d'amitié**  
mixed media on paper, 1947, 12 <sup>1</sup>/<sub>2</sub> x 9 <sup>3</sup>/<sub>8</sub> in. (23.8 x 31.8 cm)
- 21 **Painting (Woman in Front of the Sun)**  
oil, rope and wire on canvas, 1949  
8 <sup>5</sup>/<sub>8</sub> x 6 <sup>1</sup>/<sub>4</sub> x 1 in. (22 x 16 x 2.5 cm)
- 22 **Nocturne**  
gouache, Indian ink and pastel on paper, 1942  
19 x 25 <sup>1</sup>/<sub>8</sub> in. (48.2 x 63.8 cm)
- 17 **GABRIELE MÜNTER** Snow in March  
oil on board, 1948, 13 <sup>1</sup>/<sub>4</sub> x 18 in. (33.7 x 45.3 cm)
- 33 **TAKASHI MURAKAMI** Eye Love Monogram  
acrylic on canvas mounted on panel, 2003  
39 <sup>1</sup>/<sub>2</sub> x 39 <sup>3</sup>/<sub>8</sub> in. (100.5 x 100 cm)
- 24 **LOUISE NEVELSON** Southern Shores XXIII  
wood, painted white, 1968, 42 <sup>1</sup>/<sub>8</sub> x 38 <sup>1</sup>/<sub>4</sub> in. (107 x 97 cm)
- 12 **EMIL NOLDE** Brother and Sister  
watercolour on Japan paper, c. 1938,  
18 <sup>5</sup>/<sub>8</sub> x 13 <sup>1</sup>/<sub>2</sub> in. (47.3 x 34.5 cm)

page

- 13 **EMIL NOLDE** *Palmtrees on the Beach*  
oil on canvas, c. 1915, 29 x 34  $\frac{4}{5}$  in. (73.5 x 88.5 cm)
- 16 **Seascape**  
watercolour on Japan paper, c. 1930  
13  $\frac{3}{8}$  x 17  $\frac{7}{8}$  in. (33.9 x 45.3 cm)
- 19 **PABLO PICASSO** *L'Aubade*  
pastel on cardboard, 1970, 9  $\frac{5}{8}$  x 13  $\frac{1}{2}$  in. (24.5 x 34.4 cm)
- 18 **Nu couché**  
pencil on wove paper, 1969, 19  $\frac{3}{4}$  x 25  $\frac{5}{8}$  in. (50.2 x 65 cm)
- 37 **MARC QUINN** *American Sea Ice*  
oil on canvas, 2008, 66 x 99 in. (167.6 x 251.5 cm)
- cover **MARK ROTHKO** *Untitled*  
acrylic on paper mounted on canvas, c. 1968  
24 x 18 in. (61 x 45.7 cm)
- 39 **DAVID SALLE** *Blue Flowers*  
oil on canvas, 2005, 56 x 90 in. (142.4 x 228 cm)
- 26 **JESÚS RAFAEL SOTO** *Cercles superposés*  
kinetic object / 2 wooden slabs, metall rods, nylon threads  
1965, 31  $\frac{1}{2}$  x 32  $\frac{5}{8}$  in. (80 x 83 cm)
- 8 **MARIANNE VON WEREFKIN** *Dancing Couple*  
gouache on artist board, 1907-1908  
14  $\frac{5}{8}$  x 10  $\frac{7}{8}$  in. (37 x 27.5 cm)
- 36 **TOM WESSELMANN** *Blue*  
steelcut, oil on cut-out aluminium, 1996  
71 x 76 x 6 in. (180.3 x 193 x 15.3 cm)
- 38 **Kiki (CD 91)**  
oil on canvas, 2003, 66 x 88 in. (167.5 x 223.5 cm)

Max Beckmann  
Ernst Barlach  
Lovis Corinth  
Otto Dix  
George Grosz  
Oskar Kokoschka  
Georg Kolbe  
Max Liebermann  
Edvard Munch  
Egon Schiele  
Kurt Schwitters

## **GERMAN EXPRESSIONISM**

**BRÜCKE**  
Erich Heckel  
Ernst-Ludwig Kirchner  
Otto Mueller  
Emil Nolde  
Max Pechstein  
Karl Schmidt-Rottluff

**BLAUER REITER**  
H. Campendonk  
Alexej Jawlensky  
Wassily Kandinsky  
Paul Klee  
August Macke  
Franz Marc  
Gabriele Münter

**BAUHAUS**  
Lyonel Feininger  
Wassily Kandinsky  
Paul Klee  
Oskar Schlemmer

## **CLASSICAL MODERNISM**

Jean Arp  
Alexander Calder  
Lynn Chadwick  
Marc Chagall  
Eduardo Chillida  
Max Ernst  
Fernand Léger  
Alberto Giacometti  
Marino Marini  
Henri Matisse  
Joan Miró  
Henry Moore  
Louise Nevelson  
Pablo Picasso  
George Rickey

**POST WAR**  
Jean Dubuffet  
Lucio Fontana  
Sam Francis  
Yves Klein  
Piero Manzoni  
Serge Poliakoff  
Antoni Tàpies  
Günther Uecker

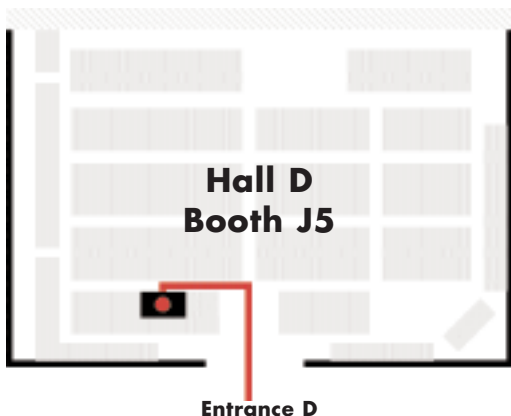
## **CONTEMPORARY**

Georg Baselitz  
Fernando Botero  
Knopp Ferro  
Anselm Kiefer  
Markus Lüpertz  
Sigmar Polke  
Gerhard Richter  
William Turnbull

**POP ART**  
Jim Dine  
Robert Indiana  
Roy Lichtenstein  
Claes Oldenburg  
Robert Rauschenberg  
James Rosenquist  
Frank Stella  
Tom Wesselmann  
Andy Warhol

**GALERIE THOMAS**

**HERE WE ARE:**



**Convention Center Drive**

## **ART BASEL MIAMI BEACH 2008**

**December 4-7, 2008**

**Phone USA-786-276 43 52**

**Fax USA-786-276 43 53**

Maximilianstrasse 25 · 80539 Munich/Germany  
Phone +49-89-29 000 80 · Fax +49-89-29 000 888  
info@galerie-thomas.de · www.galerie-thomas.de

# **GALERIE THOMAS**