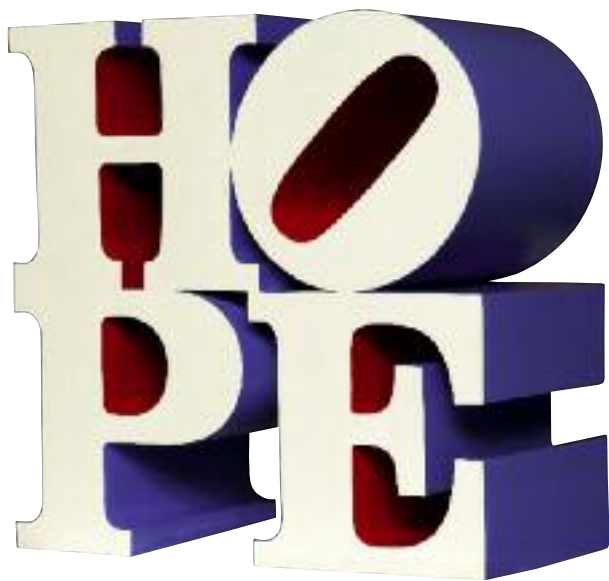


**ART BASEL  
MIAMI BEACH 2009**



**GALERIE THOMAS**

**We have opened a new location!**

515 square meters for Modern Art!  
We are looking forward to seeing you at:

## **GALERIE THOMAS MODERN**

Modern & Contemporary



Tuerkenstrasse 16 · 80333 Munich/Germany  
Phone +49-89-29 000 860 · Telefax +49-89-29 000 866  
Mail: [modern@galerie-thomas.de](mailto:modern@galerie-thomas.de) · Internet: [www.galerie-thomas.de](http://www.galerie-thomas.de)



ANSELM KIEFER      Freemason

cover: ROBERT INDIANA      Hope



CY TWOMBLY    Untitled



CY TWOMBLY    Untitled



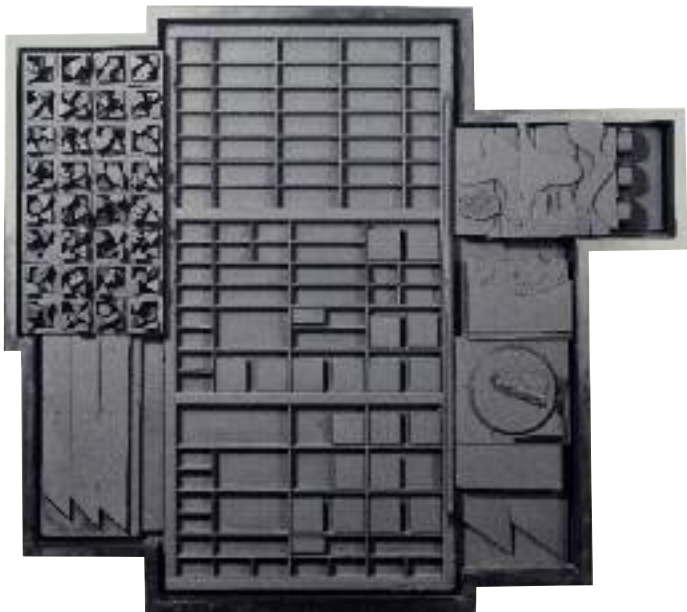
GEORGE SEGAL    Fragment – Venus Gesture



JOSEF BEUYS    Felt suit



TOM WESSELMANN Smoking Cigarette #1



LOUISE NEVELSON    Night Zag XIV



WILFREDO LAM    Sans Titre



ANSELM KIEFER      Remains of the sun



MARK DI SUVERO

Coeur de chouette



ANDY WARHOL    Guns



JIM DINE      Colourful Parrot at Home



SAM FRANCIS    When White



PETER HALLEY    Blue Prison



ROBERT INDIANA    Love



JESÚS RAFAEL DE SOTO Cruz cobalto y limón



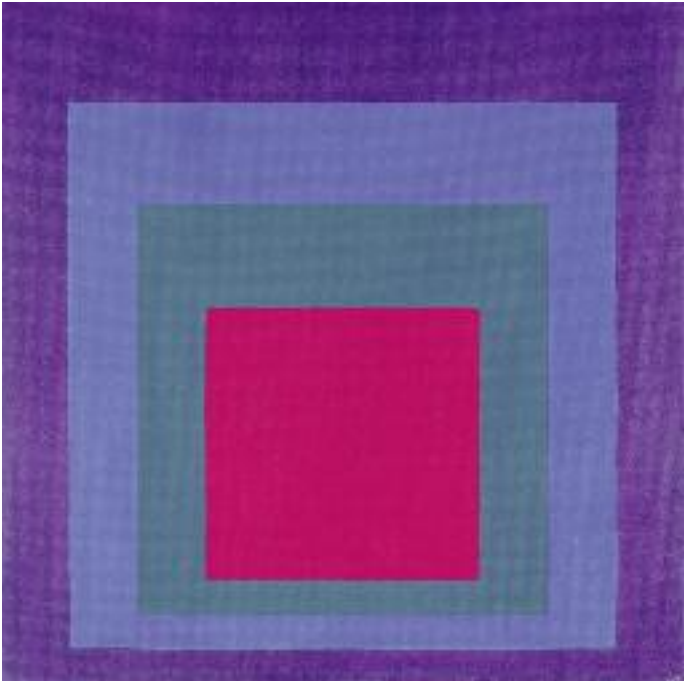
ROBERT RAUSCHENBERG

Paragraph III



TOM WESSELMANN

Study for Bouquet with Blue Shadow



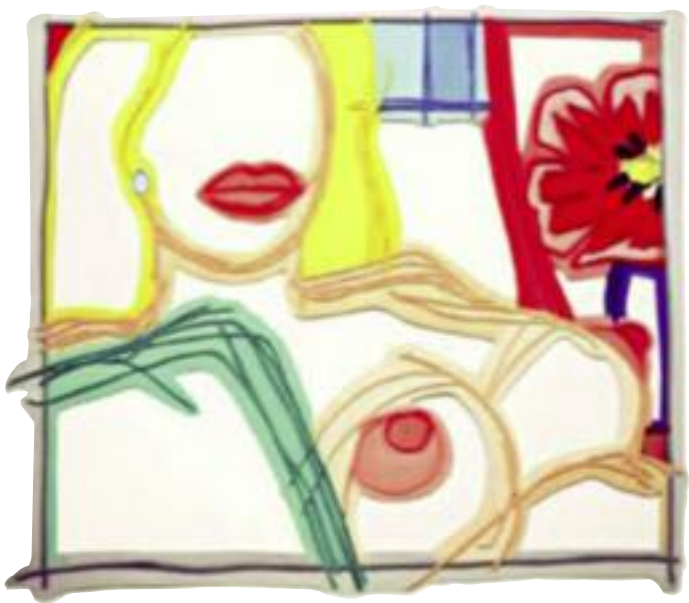
JOSEF ALBERS      Homage to the Square – Spring Tide



DAVID SALLE     Blue Flowers



MARC QUINN      Canadian Arctic Circle



TOM WESSELMANN From Nude Painting Print



FERNANDO BOTERO    Woman on a Horse



PETER BLAKE    Fiorosa



FERNANDO BOTERO      Circus Act

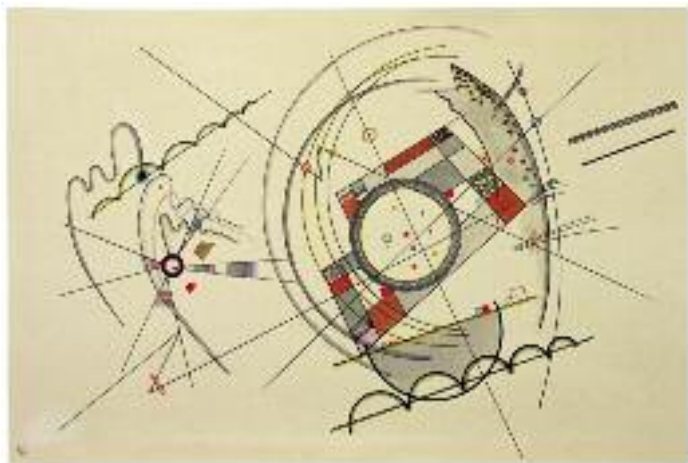


ALEXANDER ARCHIPENKO Flat Torso



DAMIEN HIRST

In a Spin, the Action of the World on Things



WASSILY KANDINSKY Coloured Lines



FERNAND LÉGER     Etude pour le Grand Remorqueur



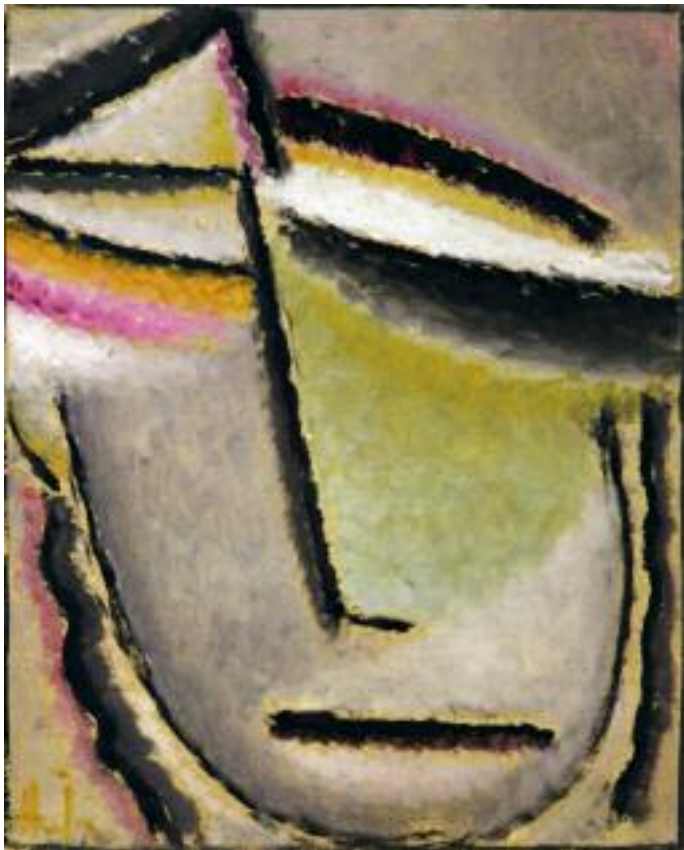
JOAN MIRÓ Tête au croissant



GEORGE GROSZ      Self-Portrait with Model in the Studio



JOAN MIRÓ      Painting (Woman in Front of the Sun)



ALEXEJ JAWLENSKY    Abstract Head



EMIL NOLDE      Sea with Black Steamship

- 19 **JOSEF ALBERS** Homage to the Square – Spring Tide  
oil on masonite, 1956, 40 x 40 in. (101.6 x 101.6 cm)
- 26 **ALEXANDER ARCHIPENKO** Flat Torso  
bronze, 1914, height 15 in. (38.1 cm), Lifetime cast
- 5 **JOSEF BEUYS** Felt suit  
felt, 1970, 66 <sup>7</sup>/<sub>8</sub> x 39 <sup>3</sup>/<sub>8</sub> in. (170 x 100 cm)  
Edition 100 + 10 h.c.
- 24 **PETER BLAKE** Fiorosa  
oil on canvas, 1974, 6 <sup>5</sup>/<sub>8</sub> x 4 <sup>3</sup>/<sub>4</sub> in. (17 x 12 cm)
- 25 **FERNANDO BOTERO** Circus Act  
oil on canvas, 2008, 50 x 39 in. (127 x 99 cm)
- 23 **Woman on a Horse**  
watercolour on paper, 2007, 41 <sup>3</sup>/<sub>8</sub> x 29 <sup>1</sup>/<sub>2</sub> in. (105 x 75 cm)
- 12 **JIM DINE** Colourful Parrot at Home  
oil enamel paint and patina on bronze, 2007  
66 x 38 x 26 in. (167.6 x 96.5 x 66 cm)
- 13 **SAM FRANCIS** When White (SFP 63-19)  
oil on canvas, 1963-1964, 98 x 76 <sup>1</sup>/<sub>8</sub> in. (249 x 193.4 cm)
- 31 **GEORGE GROSZ** Self-Portrait with Model in the Studio  
watercolour, gouache, pen and India ink on paper, 1930-1937  
21 <sup>1</sup>/<sub>4</sub> x 18 <sup>1</sup>/<sub>8</sub> in. (54.6 x 46 cm)
- 14 **PETER HALLEY** Blue Prison  
mixed media on canvas, 2007, 30 x 30 in. (76.2 x 76.2 cm)
- 27 **DAMIEN HIRST**  
In a Spin, the Action of the World on Things  
mixed media on board on fibreboard, 2002  
46 <sup>1</sup>/<sub>2</sub> x 37 <sup>7</sup>/<sub>8</sub> in. (118 x 96.5 cm)
- cover **ROBERT INDIANA** Hope  
aluminium, polychrome, 2009  
18 x 18 x 9 inch (46 x 46 x 23 cm), Edition of 9 + 1 AP
- 15 **Love**  
aluminium, polychrome, 1966/1997  
36 x 36 x 18 in. (91,4 x 91,4 x 45,7 cm), Edition of 6 + 4 AP

- 33 **ALEXEJ VON JAWLENSKY** Abstract Head  
oil on linenstructured artist board, 1927  
10  $\frac{3}{8}$  x 8  $\frac{1}{4}$  in. (26.3 x 21 cm)
- 28 **WASSILY KANDINSKY** Coloured Lines  
watercolour and Indian ink on paper on cardboard, 1924  
11  $\frac{7}{8}$  x 18 in. (30.2 x 45.7 cm)
- 1 **ANSELM KIEFER** Freemason  
gouache and chalk over photo collage in object box  
2004-2008, 59  $\frac{7}{8}$  x 45  $\frac{5}{8}$  in. (152 x 116 cm)
- 9 Remains of the sun  
mixed media on photograph on board, 1998  
42  $\frac{3}{8}$  x 64  $\frac{3}{4}$  in. (107.5 x 164.5 cm)
- 8 **WILFREDO LAM** Sans Titre  
watercolour on paper, 1947, 12 x 19 in. (30.5 x 48.2 cm)
- 29 **FERNAND LÉGER** Etude pour le Grand Remorqueur  
watercolour and gouache on Arches, 1923  
12  $\frac{1}{4}$  x 19  $\frac{5}{8}$  in. (31 x 50 cm)
- 32 **JOAN MIRÓ** Painting (Woman in Front of the Sun)  
oil, rope and wire on canvas, 1949  
8  $\frac{5}{8}$  x 6  $\frac{1}{4}$  x 1 in. (22 x 16 x 2.5 cm)
- 30 **Tête au croissant**  
bronze, 1977, 14  $\frac{1}{2}$  x 7  $\frac{1}{2}$  x 7  $\frac{7}{8}$  in. (37 x 19 x 20 cm)  
Edition of 6
- 7 **LOUISE NEVELSON** Night Zag XIV  
wood, painted black, 1973  
34  $\frac{1}{2}$  x 39 x 6 in. (87.6 x 99 x 15.2 cm)
- 34 **EMIL NOLDE** Sea with Black Steamship  
watercolour and opaque white on Japan paper, 1946  
9 x 10  $\frac{1}{2}$  in. (22.8 x 26.9 cm)
- 21 **MARC QUINN** Canadian Arctic Circle  
Oil on canvas, 2009, 64  $\frac{3}{4}$  x 98  $\frac{7}{8}$  in. (168.5 x 248.5 cm)

- 17 **ROBERT RAUSCHENBERG** Paragraph III  
pencil, gouache and collage on artist board, 1966  
15 1/4 x 20 3/8 in. (38.9 x 50.9 cm)
- 20 **DAVID SALLE** Blue Flowers  
oil on canvas, 2005, 56 x 90 in. (142.4 x 228 cm)
- 4 **GEORGE SEGAL** Fragment – Venus Gesture  
bronze, 1970, 24 x 12 1/4 x 7 in. ( 70 x 31.12 x 17.78 cm)  
Edition of 9
- 16 **JESÚS RAFAEL DE SOTO** Cruz cobalto y limón  
metal wires, paint and wood, 1975  
60 5/8 x 60 5/8 in. (154 x 154 cm)
- 10 **MARK DI SUVERO** Coeur de chouette  
steel / 2 parts, 1993, 23 5/8 x 19 3/4 x 15 3/4 in.  
(60x50x40 cm), unique piece
- 2 **CY TWOMBLY** Untitled  
chalk, graphite and oil on paper on canvas, 1959  
27 3/8 x 39 1/4 in. (69.5 x 99.6 cm)
- 3 **Untitled**  
pencil, coloured crayon and gouache on paper, 1962  
15 1/2 x 17 in. (39.4 x 43.2 cm)
- 11 **ANDY WARHOL** Guns  
synthetic polymer paint and silkscreen ink on canvas, 1981-82  
16 x 19 7/8 in. (40,5 x 50,5 cm)
- 22 **TOM WESSELMANN**  
From Nude Painting Print (Double Layer)  
oil on steelcut, 1979/98, 31 x 39 in. (78.7 x 99 cm)
- 6 **Smoking Cigarette #1**  
oil on masonite, 1980  
136,4 x 201,7 x 12,7 cm ( 53 3/4 x 79 1/2 x 4 7/8 in.)
- 18 **Study for Bouquet with Blue Shadow (99-1)**  
oil on canvas, 1999, 26 1/2 x 25 1/2 in. (67.3 x 64.8 cm)

# THOMAS GOES *MODERN* ...

## POP ART

Jim Dine  
Robert Indiana  
Roy Lichtenstein  
Claes Oldenburg  
Robert Rauschenberg  
James Rosenquist  
Frank Stella  
Tom Wesselmann  
Andy Warhol

## US POST WAR

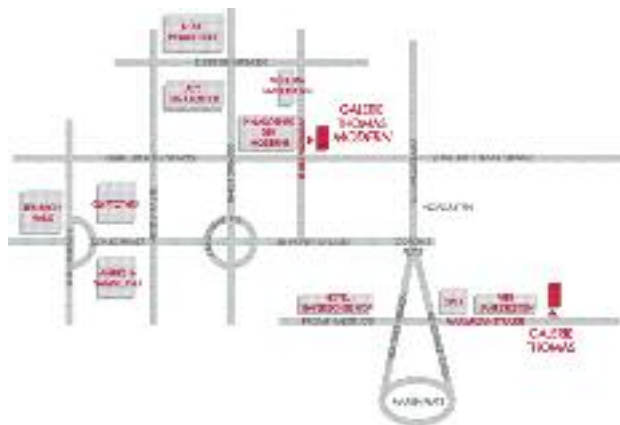
Sam Francis  
Adolph Gottlieb  
Hans Hofmann  
Willem de Kooning  
George Rickey  
George Segal

## INTERNATIONAL

Joseph Beuys  
Georg Baselitz  
John Chamberlain  
Gottard Graubner  
Anselm Kiefer  
Sigmar Polke  
Gerhard Richter  
Cy Twombly

## CONTEMPORARY

Wim Delvoye  
Peter Halley



# **GALERIE THOMAS MODERN**

Modern & Contemporary

## ... AND STAYS CLASSIC

### GERMAN EXPRESSIONISM

#### BRÜCKE

Erich Heckel  
Ernst-Ludwig Kirchner  
Otto Mueller  
Emil Nolde  
Max Pechstein  
Karl Schmidt-Rottluff

#### BLAUER REITER

H. Campendonk  
Alexej Jawlensky  
Wassily Kandinsky  
Paul Klee  
August Macke  
Franz Marc  
Gabriele Münter

#### BAUHAUS

Lyonel Feininger  
Wassily Kandinsky  
Paul Klee  
Oskar Schlemmer

### CLASSICAL MODERNISM

Max Beckmann  
Lovis Corinth  
Otto Dix  
George Grosz  
Oskar Kokoschka  
Max Liebermann  
Egon Schiele  
Kurt Schwitters

Jean Arp  
Alexander Calder  
Marc Chagall  
Robert Delaunay

Max Ernst  
Fernand Léger  
René Magritte  
Henri Matisse  
Joan Miró  
Edvard Munch  
Pablo Picasso  
Chaim Soutine

### MODERN

Fernando Botero  
Jean Dubuffet  
Knopp Ferro  
Alberto Giacometti  
Ernst Wilhelm Nay  
Louise Nevelson  
Serge Poliakoff  
Arnaldo Pomodoro  
Antoni Tàpies  
Victor Vasarely  
Fritz Winter

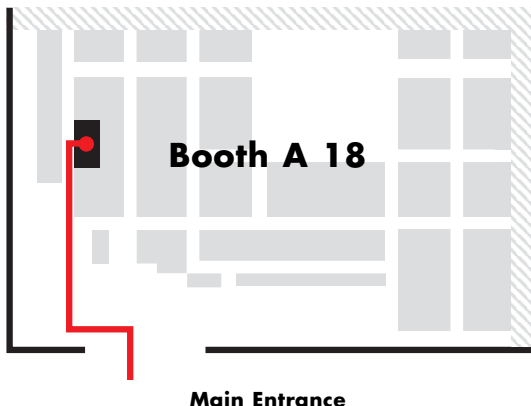
### ZERO

Arman  
Lucio Fontana  
Yves Klein  
Piero Manzoni  
Jesús Rafael Soto  
Günther Uecker

**GALERIE THOMAS**

Expressionism & Classic Modern

**HERE WE ARE:**



**Convention Center Drive**

## **ART BASEL MIAMI BEACH 2009**

**December 3-6, 2009**

**Phone USA-786-276 43 52**

**Fax USA-786-276 43 53**

Maximilianstrasse 25 · 80539 Munich/Germany  
Phone +49-89-29 000 80 · Telefax +49-89-29 000 888  
Mail: [info@galerie-thomas.de](mailto:info@galerie-thomas.de) · Internet: [www.galerie-thomas.de](http://www.galerie-thomas.de)

# **GALERIE THOMAS**