

# ART BASEL 2011



**GALERIE THOMAS**

Prices upon request. We refer to our sales and delivery conditions.  
Measurements: height by width by depth

For detailed information on the works please see pages 39-43.  
© Galerie Thomas | VG Bildkunst | 2011

cover: WASSILY KANDINSKY      Brown Ray



ROBERT DELAUNAY    Relief-disques



PABLO PICASSO    Nu couché (Reclining Nude)



FRANTISEK KUPKA    Cercles



HANS ARP    Gur



AMEDEO MODIGLIANI Cariatide



HENRI LAURENS    Baigneuse



MARC CHAGALL    Le roi David (King David)



PABLO PICASSO      Françoise



ALEXEJ V. JAWLENSKY

Abstract Head – Slanted Eyes



KARL SCHMIDT-ROTTLUFF

Still Life with Vessels



MAX PECHSTEIN    Corn Shocks



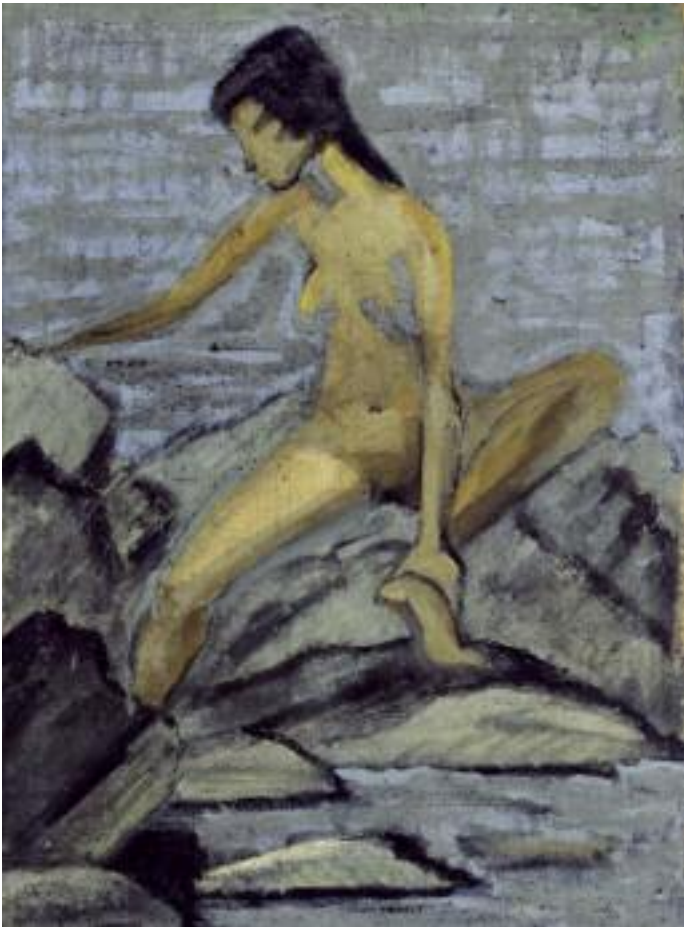
EMIL NOLDE      Sun Flowers and Larkspur



EMIL NOLDE     Marsh Landscape and Farmstead at Sunset



ERNST BARLACH    The Singing Man



OTTO MUELLER     Nude Between Rocks – Seated Nude

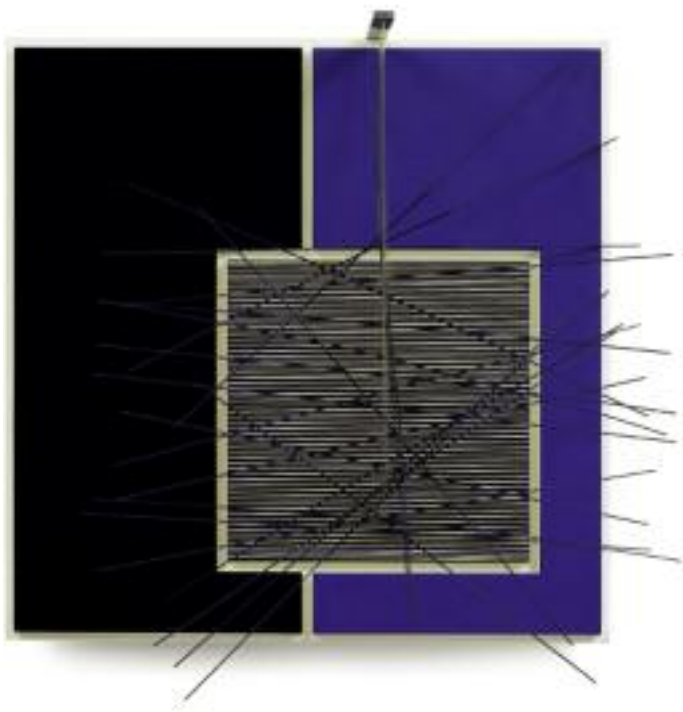


FERNANDO BOTERO

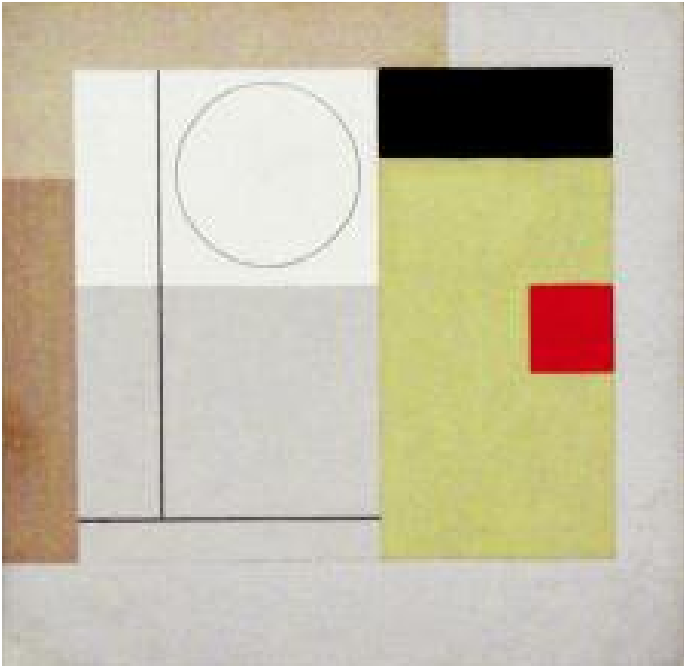
Circus Musicians



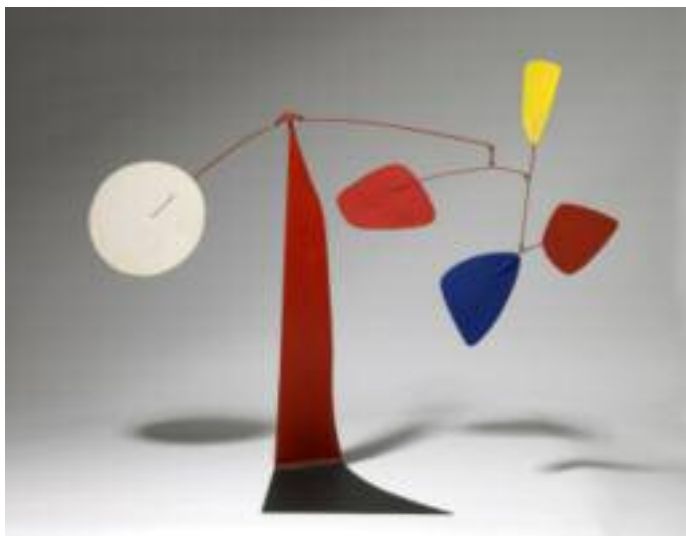
GIACOMO MANZÙ    Cardinale seduto



JESÚS RAFAEL SOTO    Untitled



BEN NICHOLSON      Painting 1943 (Version VI midget)

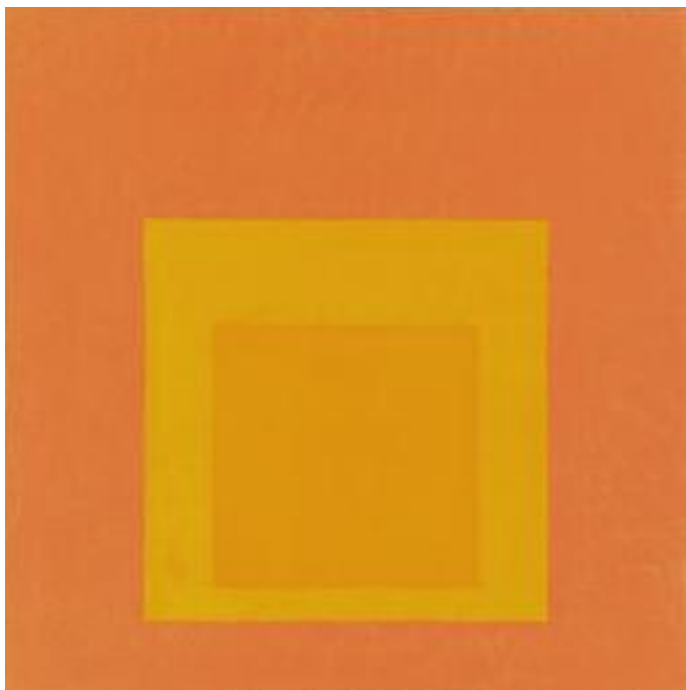


ALEXANDER CALDER

Double Dated



ALEXANDER CALDER      *Stabile Multicolour (Maquette)*



JOSEF ALBERS

Homage to the Square



JOSEF ALBERS      Study for Homage to the Square, Glad



GÜNTHER UECKER

Verletztes Feld – Struktur III



GÜNTHER UECKER    Verletztes Feld – Poesie der Destruktion



CHRISTO & JEANNE-CLAUDE 3 Store Front



JOSEPH BEUYS    FILZ-MAGNET



SAM FRANCIS    Bright Ring Drawing



JOAN MITCHELL    Ohne Titel



ED RUSCHA    Cream



ROBERT INDIANA     Hope (Blue/White)



ANTONY GORMLEY

Exposure (Human Figure Standing)



GEORGE SEGAL

Woman on Park Bench



ANSELM KIEFER Die Ungeborenen



JOSEPH BEUYS    Felt Objects in Space



ANDY WARHOL     Dollar Sign



ANDY WARHOL     Gun



JIM DINE Boo-Boo Blues

- 23 **JOSEF ALBERS**  
Study for Homage to the Square, Glad  
oil on masonite, 1969  
40,1 x 40,1 cm (15  $\frac{3}{4}$  x 15  $\frac{3}{4}$  in.)
- 22 **Homage to the Square**  
oil on masonite, 1970  
80 x 80 cm (31  $\frac{1}{2}$  x 31  $\frac{1}{2}$  in.)
- 4 **HANS ARP** Gur  
bronze, 1963 / cast 1976/77  
98 x 23,5 x 34,5 cm (38  $\frac{1}{2}$  x 9  $\frac{1}{4}$  x 13  $\frac{1}{2}$  in.)  
edition of 6
- 14 **ERNST BARLACH** The Singing Man  
bronze, 1928 / 1962  
49,3 x 46,6 x 42,6 cm (19  $\frac{3}{8}$  x 18  $\frac{3}{8}$  x 16  $\frac{3}{4}$  in.)  
edition of 57 unnumbered casts including 16 lifetime casts
- 35 **JOSEPH BEUYS** Felt Objects in Space  
gouache on paper, 1963  
22,4 x 16,5 cm (8  $\frac{7}{8}$  x 6  $\frac{1}{2}$  in.)
- 27 **FILZ-MAGNET**  
two felt pieces mounted in a metal box, 1984  
42 x 34 cm (16  $\frac{1}{3}$  x 13  $\frac{3}{8}$  in.)
- 16 **FERNANDO BOTERO** Circus Musicians  
oil on canvas, 2008  
140 x 100 cm (55  $\frac{1}{8}$  x 39  $\frac{3}{8}$  in.)

page

- 21 **ALEXANDER CALDER** *Stabile Multicolour (Maquette)*  
metal, painted, 1962  
37,5 x 24 x 49,5 cm (14  $\frac{3}{4}$  x 9  $\frac{1}{2}$  x 19  $\frac{1}{2}$  in.)
- 20 **Double Dated**  
metal and wire, painted, 1974  
69 x 79 x 30 cm (27  $\frac{1}{8}$  x 31  $\frac{1}{8}$  x 11  $\frac{7}{8}$  in.)
- 7 **MARC CHAGALL** *Le roi David (King David)*  
stone, 1952  
52 x 23,5 x 9,5 cm (20  $\frac{1}{2}$  x 9  $\frac{1}{4}$  x 3  $\frac{3}{4}$  in.)  
unique
- 26 **CHRISTO & JEANNE-CLAUDE** *3 Store Front*  
mixed media and collage, 1965-67  
59 x 89 cm (23  $\frac{1}{4}$  x 35 in.)
- 1 **ROBERT DELAUNAY** *Relief-disques*  
gouache and sand over pencil on cardboard, 1936  
65,7 x 105,4 cm (25  $\frac{7}{8}$  x 41  $\frac{1}{2}$  in.)
- 38 **JIM DINE** *Boo-Boo Blues*  
acrylic and charcoal on canvas, 2010  
81,5 x 65 cm (32  $\frac{1}{8}$  x 25  $\frac{5}{8}$  in.)
- 28 **SAM FRANCIS** *Bright Ring Drawing*  
watercolor on paper, 1965  
55,3 x 74,9 cm (21  $\frac{3}{4}$  x 29  $\frac{1}{2}$  in.)
- 32 **ANTONY GORMLEY**  
*Exposure (Human Figure Standing)*  
cast iron, 1997  
191 x 35 x 55 cm (75  $\frac{1}{4}$  x 13  $\frac{3}{4}$  x 21  $\frac{5}{8}$  in.)  
no. 1/101 (prototype)

page

- 31 **ROBERT INDIANA** Hope (Blue/White)  
aluminium, painted blue, white, 2010  
45,7 x 45,7 x 22,8 cm (18 x 18 x 9 in.)  
edition of 9 + 1

- 9 **ALEXEJ VON JAWLENSKY**  
Abstract Head – Slanted Eyes  
oil on linenstructured paper, 1930  
37,7 x 21,1 cm (14 <sup>5</sup>/<sub>8</sub> x 8 <sup>1</sup>/<sub>4</sub> in.)

- cover **WASSILY KANDINSKY** Brown Ray  
watercolour and Indian ink on paper on cardboard, 1924  
40,4 x 30,3 cm (15 <sup>7</sup>/<sub>8</sub> x 11 <sup>7</sup>/<sub>8</sub> in.)

- 34 **ANSELM KIEFER** The Unborn  
collage with lead on photograph, 2001/2002  
123,5 x 60 cm (48 <sup>5</sup>/<sub>8</sub> x 23 <sup>5</sup>/<sub>8</sub> in.)

- 3 **FRANTISEK KUPKA** Cercles  
gouache on paper, 1935  
16,1 x 19,8 cm (6 <sup>3</sup>/<sub>8</sub> x 7 <sup>3</sup>/<sub>4</sub> in.)

- 6 **HENRI LAURENS** Baigneuse  
bronze, 1931  
57,2 x 68 x 40 cm (22 <sup>1</sup>/<sub>2</sub> x 26 <sup>3</sup>/<sub>4</sub> x 15 <sup>3</sup>/<sub>4</sub> in.)  
edition of 6

- 17 **GIACOMO MANZÙ**  
Cardinale seduto (Seated Cardinal)  
bronze, 1979, height 37,8 cm (14 <sup>7</sup>/<sub>8</sub> in.)  
unique

- 29 **JOAN MITCHELL** Untitled  
oil on canvas, diptych, 1976  
45,7 x 53,5 cm (18 x 21 in.)

page

- 5 **AMEDEO MODIGLIANI** *Cariatide*  
pencil and graphite on vellum paper, 1913  
64 x 49 cm (25 1/8 x 19 1/4 in.)
- 15 **OTTO MUELLER**  
*Nude Between Rocks – Seated Nude Between Rocks*  
distemper on burlap, c. 1924  
119,5 x 87,5 cm (47 x 34 1/2 in.)  
other side: 'House with Sunflower', c. 1927
- 19 **BEN NICHOLSON** *Painting 1943 (Version VI midget)*  
oil on artist board, 1943  
19,7 x 19,7 cm (7 3/4 x 7 3/4 in.)
- 12 **EMIL NOLDE** *Sun Flowers and Larkspur*  
watercolour on Japan paper  
41,9 x 27,5 cm (16 1/2 x 10 7/8 in.)
- 13 *Marsh Landscape and Farmstead at Sunset*  
watercolour on Japan paper  
33,5 x 46,5 cm (13 1/8 x 18 3/8 in.)
- 11 **MAX PECHSTEIN** *Corn Shocks*  
oil on canvas, 1922  
80,3 x 100 cm (31 3/4 x 39 5/8 in.)
- 2 **PABLO PICASSO** *Nu couché (Reclining Nude)*  
pencil drawing, 1969  
47,5 x 62 cm (18 3/4 x 24 3/8 in.)
- 8 *Françoise*  
lithograph on velin, 1946  
60 x 49 cm (23 5/8 x 19 1/4 in.)  
edition of 50

page

- 30 **ED RUSCHA** Cream  
gunpowder on paper, 1974  
56,6 x 71,9 cm (22 <sup>3</sup>/<sub>4</sub> x 28 <sup>3</sup>/<sub>4</sub> in.)
- 10 **KARL SCHMIDT-ROTLUFF** Still Life with Vessels  
oil on canvas, 1913  
65,3 x 73,5 cm (25 <sup>3</sup>/<sub>4</sub> x 29 in.)
- 33 **GEORGE SEGAL** Woman on Park Bench  
bronze with white patina, metal bench, 1998  
132 x 184,2 x 95,3 cm (52 x 72 <sup>1</sup>/<sub>2</sub> x 37 <sup>1</sup>/<sub>2</sub> in.)  
edition of 6 + 3
- 18 **JESÚS RAFAEL SOTO** Untitled  
wood, nylon threads, metal rods and paint, c. 1970  
60 x 60 x 43 cm (23 <sup>5</sup>/<sub>8</sub> x 23 <sup>5</sup>/<sub>8</sub> x 17 in.)
- 25 **GÜNTHER UECKER**  
Verletztes Feld – Poesie der Destruktion  
nails on painted canvas on wood, 1983  
40 x 40 x 7 cm (15 <sup>3</sup>/<sub>4</sub> x 15 <sup>3</sup>/<sub>4</sub> x 2 <sup>3</sup>/<sub>4</sub> in.)
- 24 Verletztes Feld – Struktur III  
nails on painted canvas on wood, 1982  
40 x 40 cm (15 <sup>3</sup>/<sub>4</sub> x 15 <sup>3</sup>/<sub>4</sub> in.)
- 36 **ANDY WARHOL** Dollar Sign  
synthetic polymer paint and silkscreen ink on canvas, 1981  
50,8 x 40,6 cm (20 x 16 in.)
- 37 **Gun**  
synthetic polymer paint and silkscreen ink on canvas  
1981-1982  
40,7 x 50,8 cm (16 x 20 in.)

# THOMAS GOES MODERN ...

## POP ART

Jim Dine  
Robert Indiana  
Roy Lichtenstein  
Claes Oldenburg  
Robert Rauschenberg  
James Rosenquist  
Frank Stella  
Tom Wesselmann  
Andy Warhol

## US POST WAR

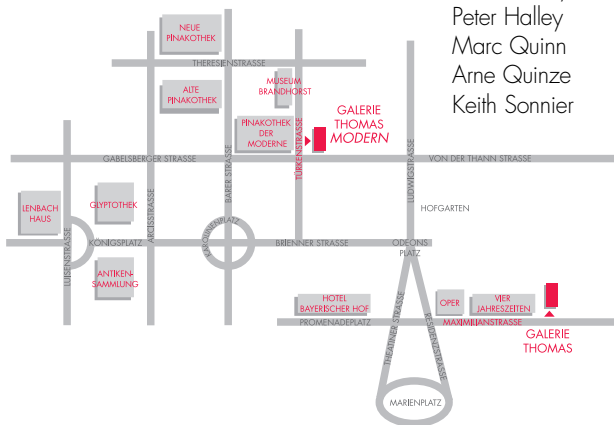
Sam Francis  
Adolph Gottlieb  
Hans Hofmann  
Willem de Kooning  
Joan Mitchell  
George Rickey  
George Segal

## INTERNATIONAL

Georg Baselitz  
Joseph Beuys  
John Chamberlain  
Gotthard Graubner  
Anselm Kiefer  
Sigmar Polke  
Gerhard Richter  
Cy Twombly

## CONTEMPORARY

Wim Delvoye  
Peter Halley  
Marc Quinn  
Arne Quinze  
Keith Sonnier



# GALERIE THOMAS MODERN

Modern & Contemporary

## ... AND STAYS CLASSIC

### GERMAN EXPRESSIONISM

#### BRÜCKE

Erich Heckel  
Ernst-Ludwig Kirchner  
Otto Mueller  
Emil Nolde  
Max Pechstein  
Karl Schmidt-Rottluff

#### BLAUER REITER

H. Campendonk  
Alexej Jawlensky  
Wassily Kandinsky  
Paul Klee  
August Macke  
Franz Marc  
Gabriele Münter

#### BAUHAUS

Lyonel Feininger  
Wassily Kandinsky  
Paul Klee  
Oskar Schlemmer

### CLASSICAL MODERNISM

Max Beckmann  
Lovis Corinth  
Otto Dix  
George Grosz  
Oskar Kokoschka  
Max Liebermann  
Egon Schiele  
Kurt Schwitters

Jean Arp  
Alexander Calder  
Marc Chagall  
Robert Delaunay

Max Ernst  
Fernand Léger  
René Magritte  
Henri Matisse  
Joan Miró  
Edvard Munch  
Pablo Picasso  
Chaim Soutine

### MODERN

Fernando Botero  
Jean Dubuffet  
Knopp Ferro  
Alberto Giacometti  
Ernst Wilhelm Nay  
Louise Nevelson  
Serge Poliakoff  
Arnaldo Pomodoro  
Antoni Tàpies  
Victor Vasarely  
Fritz Winter

### ZERO

Arman  
Lucio Fontana  
Yves Klein  
Piero Manzoni  
Jesús Rafael Soto  
Günther Uecker

**GALERIE THOMAS**

Expressionism & Classic Modern

**HERE WE ARE!**



**Entrance**

**Art Basel**

**Hall 2.0 · Booth F13 · June 15 – 19, 2011**

**Phone +41-61-699 50 81 · Fax +41-61-699 53 94**

Maximilianstrasse 25 · 80539 Munich · Germany  
Phone +49-89-29 000 80 · Fax +49-89-29 000 888  
info@galerie-thomas.de · www.galerie-thomas.de

**GALERIE THOMAS**