

TEFAF 2010 MAASTRICHT

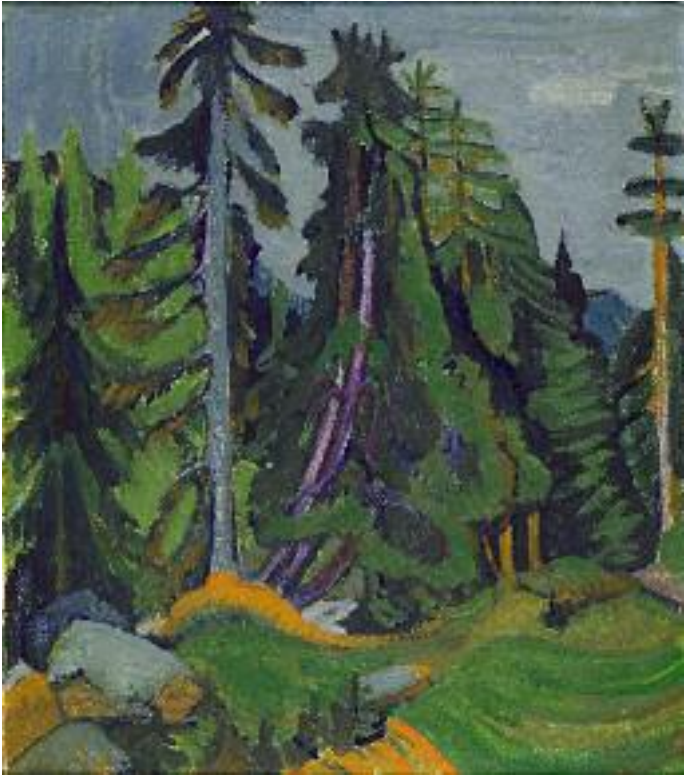


GALERIE THOMAS

Prices upon request. We refer to our sales and delivery conditions.
Measurements: height by width by depth.

For detailed information on the works please see pages 33-35.

© Galerie Thomas 2010, VG Bildkunst and
Stiftung Hans Arp und Sophie Taeuber-Arp e.V., Rolandswerth



ERNST LUDWIG KIRCHNER

Mountain Forest Trees



FERNAND LÉGER Étude pour Le Grand Remorqueur



OSKAR SCHLEMMER Abstract Figure (Relief H)



WASSILY KANDINSKY Walking Couple



HANS ARP Travesti d'oiseau



PABLO PICASSO Nu couché



ALEXANDER ARCHIPENKO Seated Woman



GABRIELE MÜNTER Abstract



ALEXEJ VON JAWLENSKY Large Variation – Blowing a Gale



KEES VAN DONGEN

Le moulin (The Mill)



HEINRICH CAMPENDONK

Cat in Mountain Landscape



EMIL NOLDE Yellow Flag and Pansy



OTTO MUELLER Bathing Girl at a Forest Lake



KARL SCHMIDT-ROSSLUFF Summer



KARL SCHMIDT-ROTLUFF

Still Life with Vessels



PIERRE BONNARD

La Roulotte à Vernonnet



KARL SCHMIDT-ROTTLUFF

Cluster of Milfoil



MAX ERNST Les patineurs (The Skaters)



JOAN MIRÓ Painting (Woman in Front of the Sun)



LUCIO FONTANA

Concetto Spaziale – Natura



ARMAN Jéricho



BALTASAR LOBO *Mouette*



KAREL APPEL Untitled



LOUISE NEVELSON Untitled



ANSELM KIEFER Freemasons



FERNANDO BOTERO Reclining Woman with Fruit



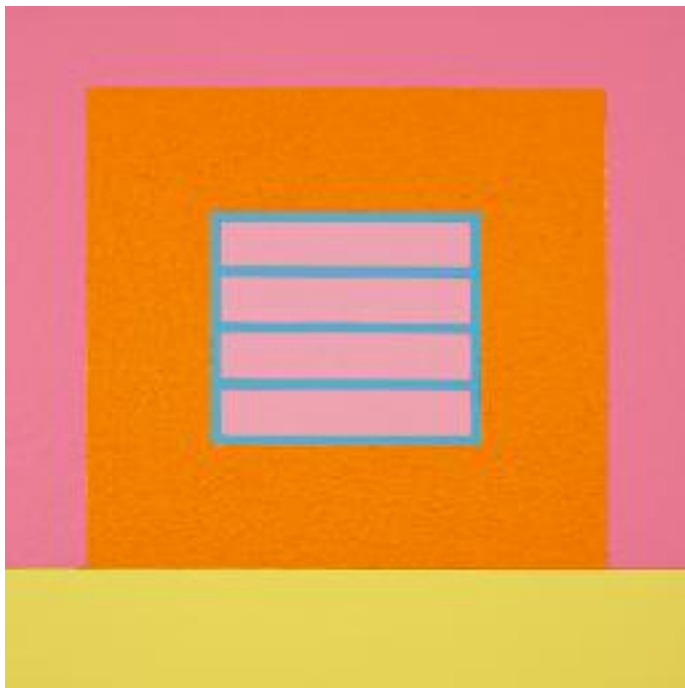
FERNANDO BOTERO Circus Musicians



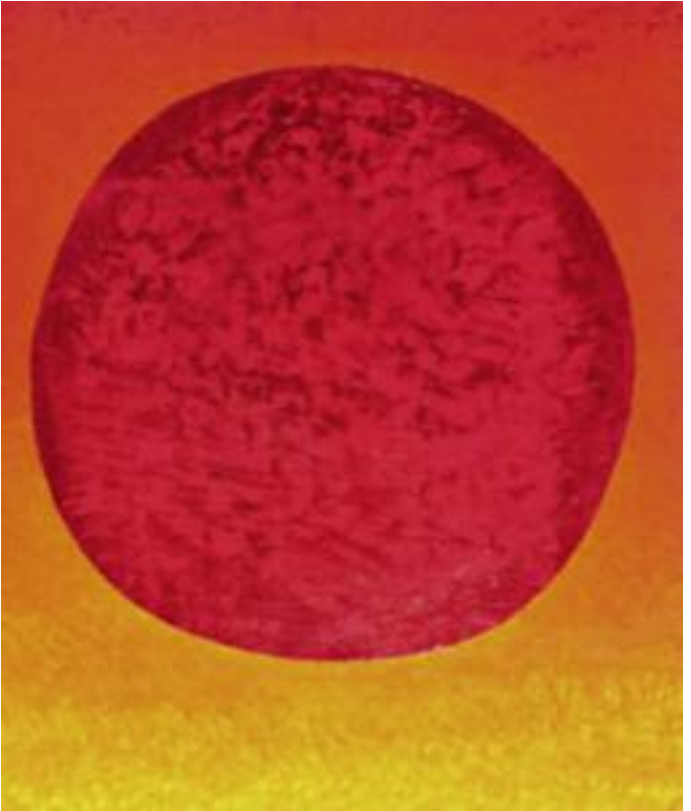
STEPHAN BALKENHOL Man (Blue Relief)



ERNST WILHELM NAY Jota



PETER HALLEY Orange Prison



RUPPRECHT GEIGER 404/64



MARC QUINN

Labrador Sound Thaw

- 23 **KAREL APPEL** *Untitled*
oil on canvas, 1957, 116 x 85 cm (45 ⁵/₈ x 33 ¹/₂ in.)
- 7 **ALEXANDER ARCHIPENKO** *Seated Woman*
bronze, with green patina, 1912 / posthumous cast c. 1970
39,9 x 19,4 x 17,5 cm (15 ³/₄ x 7 ⁵/₈ x 6 ⁷/₈ in.)
edition 15 posthumous casts
- 21 **ARMAN** *Jéricho*
accumulation of car horns in wooden box, 1960
50 x 60 x 20 cm (19 ³/₄ x 23 ⁵/₈ x 7 ⁷/₈ in.)
- 5 **HANS ARP** *Travesti d'oiseau*
polished bronze, plaster 1964/bronze 1976
43 x 15 x 15 cm (16 ⁷/₈ x 5 ⁷/₈ x 5 ⁷/₈ in.)
edition 5
- 28 **STEPHAN BALKENHOL** *Man (Blue Relief)*
painted Wawa wood, 2007
80 x 60 x 2,4 cm (31 ¹/₂ x 23 ⁵/₈ x 1 in.)
- 16 **PIERRE BONNARD** *La Roulotte à Vernonnet*
watercolour and pencil on paper on canvas, c. 1930
34,8 x 42,8 cm (13 ³/₄ x 17 in.)
- 26 **FERNANDO BOTERO** *Reclining Woman with Fruit*
bronze, with black patina, 2005
24,5 x 70,5 x 26,5 cm (9 ⁵/₈ x 27 ³/₄ x 10 ¹/₂ in.)
edition 6 + 2
- 27 **Circus Musicians**
oil on canvas, 2008, 140 x 100 cm (55 ¹/₈ x 39 ³/₈ in.)
- 11 **HEINRICH CAMPENDONK** *Cat in Mountain Landscape*
oil on canvas, 1914, 54,4 x 67,5 cm (21 ¹/₂ x 26 ⁵/₈ in.)
- 10 **KEES VAN DONGEN** *Le moulin (The Mill)*
gouache and watercolour on laid paper
35,7 x 50,6 cm (14 x 20 in.)

- 18 **MAX ERNST** *Les patineurs (The Skaters)*
oil on wood, 1959, 41 x 33,3 cm (16 1/8 x 13 1/8 in.)
- 20 **LUCIO FONTANA**
Concetto Spaziale – Natura (in two parts)
polished bronze, 1967, edition 500 (each)
each 27 x 22 x 22 cm (10 5/8 x 8 5/8 x 8 5/8 in.)
- 31 **RUPPRECHT GEIGER** *404/64*
oil on canvas, 1964, 90,7 x 80 cm (35 5/8 x 31 1/2 in.)
- 30 **PETER HALLEY** *Orange Prison*
fluorescent acrylic with relief particles on canvas, 2009
106,7 x 106,7 cm (42 x 42 in.)
- cover **ALEXEJ VON JAWLENSKY** *Abstract Head – Sunrise*
oil on cardboard, 1931, 42,8 x 32,8 cm (16 7/8 x 12 7/8 in.)
- 9 *Large Variation – Blowing a Gale*
oil on linen-finish paper, on cardboard, 1916
54,3 x 36,2 cm (21 2/5 x 14 1/4 in.)
- 4 **WASSILY KANDINSKY** *Walking Couple*
gouache on black cardboard, 1905
33,1 x 48 cm (13 x 18 7/8 in.)
- 25 **ANSELM KIEFER** *Freemasons*
gouache and chalk over photocollage in object box, 2004 – 2008
152 x 116 cm (59 7/8 x 45 5/8 in.)
- 1 **ERNST LUDWIG KIRCHNER** *Mountain Forest Trees*
oil on canvas, 1918, 80,3 x 70,5 cm (31 5/8 x 27 3/4 in.)
- 2 **FERNAND LÉGER** *Étude pour Le Grand Remorqueur*
watercolour and gouache on Arches paper, 1923
31 x 50 cm (12 1/4 x 19 5/8 in.)
- 22 **BALTASAR LOBO** *Mouette*
white carrara marble, 1972
25,5 x 51 x 19 cm (10 5/8 x 21 5/8 x 7 1/2 in.)

- 19 **JOAN MIRÓ** **Painting (Woman in Front of the Sun)**
oil, rope and wire on canvas, 1949
22 x 16 x 2,5 cm (8 ⁵/₈ x 6 ¹/₄ x 1 in.)
- 13 **OTTO MUELLER**
Bathing Girl at a Forest Lake (Seated Nude at the Water)
watercolour, gouache, chalk and ink on paper, 1925
52,3 x 67,9 cm (20 ⁵/₈ x 26 ³/₄ in.)
- 8 **GABRIELE MÜNTER** **Abstract**
oil on artist board, 1915, 41 x 33 cm (16 ¹/₈ x 13 in.)
- 29 **ERNST WILHELM NAY** **Jota**
oil on canvas, 1959, 162 x 130 cm (62 ³/₈ x 50 ⁵/₈ in.)
- 24 **LOUISE NEVELSON** **Untitled**
wood, painted black, 1976 – 78
176,4 x 117 x 20,8 cm (69 ¹/₂ x 46 x 8 ¹/₄ in.)
- 12 **EMIL NOLDE** **Yellow Flag and Pansy**
watercolour on japan paper, c. 1930/35
35 x 47 cm (13 ³/₄ x 18 ¹/₂ in.)
- 6 **PABLO PICASSO** **Nu couché**
pencil drawing, 1969, 47,5 x 62 cm (18 ³/₄ x 24 ³/₈ in.)
- 32 **MARC QUINN** **Labrador Sound Thaw**
oil on canvas, 2009, 261 x 169 cm (102 ³/₄ x 66 ¹/₂ in.)
- 3 **OSKAR SCHLEMMER** **Abstract Figure (Relief H)**
aluminium cast, plaster 1919/cast 1936
65,4 x 27,5 x 3 cm (25 ³/₄ x 10 ⁷/₈ x 1 ¹/₈ in.)
edition 10 + 2
- 17 **KARL SCHMIDT-ROTLUFF** **Cluster of Milfoil**
watercolour on paper, 1964, 50 x 69,5 cm (31 ⁵/₈ x 27 ³/₄ in.)
- 14 **Summer**
watercolour and India ink on paper, 1924
49 x 60,3 cm (19 ¹/₄ x 23 ³/₄ in.)
- 15 **Still Life with Vessels**
oil on canvas, 1913, 65,3 x 73,5 cm (25 ³/₄ x 29 in.)

THOMAS GOES MODERN ...

POP ART

Jim Dine
Robert Indiana
Roy Lichtenstein
Claes Oldenburg
Robert Rauschenberg
James Rosenquist
Frank Stella
Tom Wesselmann
Andy Warhol

US POST WAR

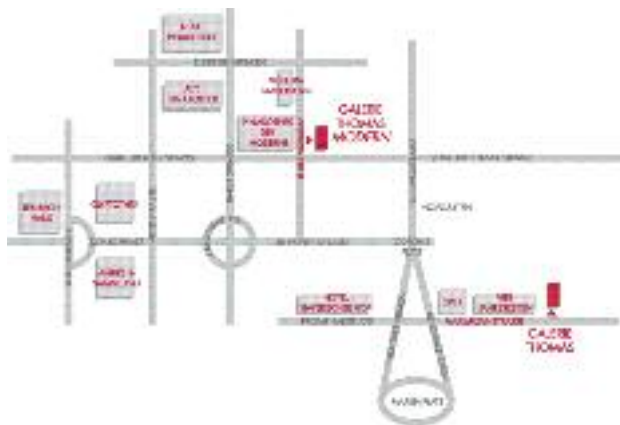
Sam Francis
Adolph Gottlieb
Hans Hofmann
Willem de Kooning
George Rickey
George Segal

CONTEMPORARY

Wim Delvoye
Peter Halley
Arne Quinze

INTERNATIONAL

Joseph Beuys
Georg Baselitz
John Chamberlain
Gotthard Graubner
Anselm Kiefer
Sigmar Polke
Gerhard Richter
Cy Twombly



GALERIE THOMAS MODERN

Modern & Contemporary

... AND STAYS CLASSIC

GERMAN EXPRESSIONISM

BRÜCKE

Erich Heckel
Ernst-Ludwig Kirchner
Otto Mueller
Emil Nolde
Max Pechstein
Karl Schmidt-Rottluff

BLAUER REITER

H. Campendonk
Alexej Jawlensky
Wassily Kandinsky
Paul Klee
August Macke
Franz Marc
Gabriele Münter

BAUHAUS

Lyonel Feininger
Wassily Kandinsky
Paul Klee
Oskar Schlemmer

CLASSICAL MODERNISM

Max Beckmann
Lovis Corinth
Otto Dix
George Grosz
Oskar Kokoschka
Max Liebermann
Egon Schiele
Kurt Schwitters

Jean Arp
Alexander Calder
Marc Chagall
Robert Delaunay

Max Ernst
Fernand Léger
René Magritte
Henri Matisse
Joan Miró
Edvard Munch
Pablo Picasso
Chaim Soutine

MODERN

Fernando Botero
Jean Dubuffet
Knopp Ferro
Alberto Giacometti
Ernst Wilhelm Nay
Louise Nevelson
Serge Poliakoff
Arnaldo Pomodoro
Antoni Tàpies
Victor Vasarely
Fritz Winter

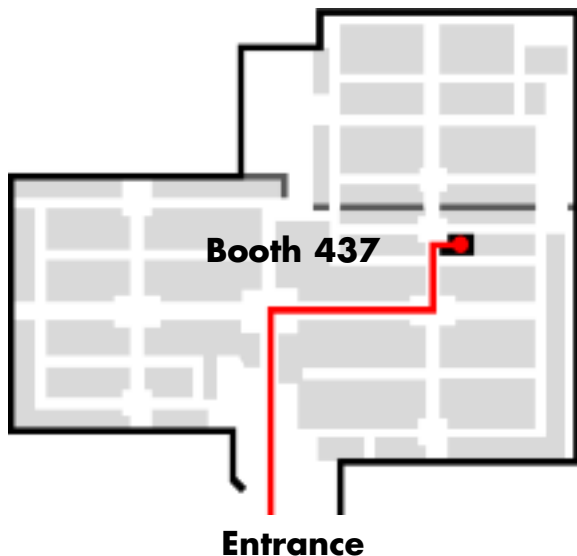
ZERO

Arman
Lucio Fontana
Yves Klein
Piero Manzoni
Jesús Rafael Soto
Günther Uecker

GALERIE THOMAS

Expressionism & Classic Modern

HERE WE ARE:



TEFAF Maastricht 2010

Booth 437

March 12 - 21, 2010

Phone +31-43-383 87 85, Fax + 31-43-383 86 40

Maximilianstrasse 25 · 80539 Munich/Germany

Phone +49-89-29 000 80 · Fax +49-89-29 000 888

info@galerie-thomas.de · www.galerie-thomas.de

GALERIE THOMAS